

Implications for the role of natural products in Parkinson disease therapy

Keywords

Oxidative stress, Parkinson's disease, Mitochondria, Medicinal plants, Genetic variants, Genetic and environmental factors

Abstract

Humans still suffer from several nervous system diseases affecting perception and body movement, such as Alzheimer's and Parkinson's diseases (PD). PD is a common disease of the nervous system worldwide that is characterized by neurodegenerative movement disorders. There are some indications that the occurrence of oxidative stress and mitochondrial dysfunction are among the main and obvious causes of PD. Parkinson's patients are still dependent on taking levodopa drug, although it has several side effects. Therefore, many scientists and pharmacologists are striving to find a potential drug that can stop or mitigates this disease. Research initiates to find effective natural substances against PD that can diminish the oxidation process in the nerve cells. Therefore, the aim of conducting this review was to highlight the role of some natural products, in the possibility of protecting neurons and improving their biological functions in the way to develop new therapeutic strategies against PD.

Preprint

Implications for the role of natural products in Parkinson disease therapy

Running title: Role of natural products in Parkinson's disease

Preprint

Abstract

Humans still suffer from several nervous system diseases affecting perception and body movement, such as Alzheimer's and Parkinson's diseases. Parkinson's disease (PD) is a common disease of the nervous system worldwide that is characterized by neurodegenerative movement disorders. Patients with Parkinson's disease are characterized by the slow loss of dopaminergic (DA-ergic) neurons, especially in areas of brain tissue called the Substantia Nigra pars Compacta (SNPC). However, there is no clear evidence that is responsible for the events of the disease, which is still vague. There are some indications that the occurrence of oxidative stress and mitochondrial dysfunction are among the main and obvious causes of the disease. Parkinson's patients are still dependent on taking levodopa as recommended therapeutic drug. This drug, although it has many side effects, slows down the progression of the disease. Therefore, many scientists and pharmacologists are striving to find a potential drug that can stop the disease while reducing side effects as much as possible. Research initiates to find effective natural substances against Parkinson's disease that can renew the vitality of mitochondria and activate their function, as well as diminish the oxidation process in the nerve cells. Therefore, the aim of conducting this review was to highlight the role of some natural products from plant sources such as natural medicinal herbs or marine sources, in the possibility of protecting neurons and improving their biological functions in the way to develop new therapeutic strategies against PD.

Keywords: Parkinson's disease, Genetic and environmental factors, Genetic variants, Mitochondria, Oxidative stress, Medicinal plants

Introduction

One of the most common neurological disorders is Parkinson's disease (PD). PD affects a large number of people globally estimated as more than 6 million people and it is expected to multiply several times by the year 2040 [1]. This disease is found to spread by 1% in individuals whose age ranges from 60-65 years, and this percentage increases to reach 4% in individuals whose age ranges from 85 years and over [1]. Parkinson's disease is characterized by a number of symptoms, the most important of which are some abnormal motor manifestations such as postural instability, tremor at rest, hunched posture, freezing, and slowness of movement. Additionally, there are behavioral and cognitive symptoms, fatigue, autonomic dysregulation, and sleep deprivation [2, 3]. It was found that the disease is associated with a noticeable loss of dopaminergic neurons. It was also found that the remaining neurons contain protein inclusions called Lewy bodies (LBs) [4].

The causes leading to the onset of Parkinson's disease are not exactly known, but it has been found that the majority of patients with this disease have a genetic background (one of the relatives already had this disease). From a genetic point of view, it has been found that patients (5-10%) have individual forms of the gene associated with the onset of the disease and thus have a classic type of Mendelian inheritance. However, there are a number of genetic and environmental risk factors that cause the onset of this disease in most Parkinson's patients [5].

Increasing age may affect the neurons that produce dopamine in the brain, which in turn may lead to the onset of clinical symptoms of Parkinson's disease. Thus, the number of dopaminergic neurons in an individual is a major factor influencing the onset of PD [6]. Furthermore, environmental factors such as exposure to pesticides and accidents including head trauma may play a distinct role in the development of PD [7]. On the other hand, caffeine consumption and cigarette smoking may reduce the incidence of Parkinson's disease, although the molecular mechanism remains unclear [8].

Genetic background of Parkinson's disease

Some studies have indicated that there is a genetic mutation associated with the onset of Parkinson's disease [9]. Although this discovery is from two decades ago, the molecular basis of Parkinson's disease is still unknown. On the other hand, a genetic study of Parkinson's disease found several genes associated with its appearance. These genes are LRRK2 (leucine-rich repeat kinase 2), alpha synuclein, Parkin, VPS35 (vacuolar protein sorting 35), DJ-1 (protein deglycase) and PINK1 (phosphatase and tensin homologue)-induced kinase1). The degree of its appearance is depending on whether these gene are in a recessive or dominant form [10]. Also, there a study has been shown that genetic variants of methylenetetrahydrofolate reductase (MTHFR) gene are responsible for protecting or causing PD [10]. For example, genetic variation in the MTHFR gene may be associated with the onset of PD. However, a polymorphism in a small fragment (C677T) of the MTHFR gene that substitutes the amino acid valine to alanine was associated with a reduced susceptibility to PD among Chinese patients. Therefore, some advanced genetic tools such as next-generation sequencing (NGS), genome-wide association (GWAS) and exome sequencing help interpret and understand the molecular basis of this disease [11].

The development of Parkinson's disease is involved in genetic variation, as 25% of the overall risk of Parkinson's disease is due to the process of genetic variation [12]. Figure 1 shows the relationship of genetic variation to the severity of Parkinson's disease, as some genetic variants are involved in the severity of the disease. Certain single genes have enough rare genetic variants to cause the disease. By analyzing the association between families carrying the disease, these single-genes which cause of the Parkinson's disease were discovered. Among these genes responsible for the onset of Parkinson's disease are the PRKN, PINK1, and DJ-1 genes. Additionally, mutations in some genes are responsible for the onset of Parkinson's disease such as mutations in SNCA (alpha-synuclein gene) and mutations in the PARK7 gene. On the other hand, there are large numbers of common genetic variants that individually contribute a small amount to the risk of PD. Also in the middle of this spectrum are uncommon (but not rare) variants of intermediate risk, such as variants in the GBA (glucocerebrosidase) and LRRK2 genes [13].

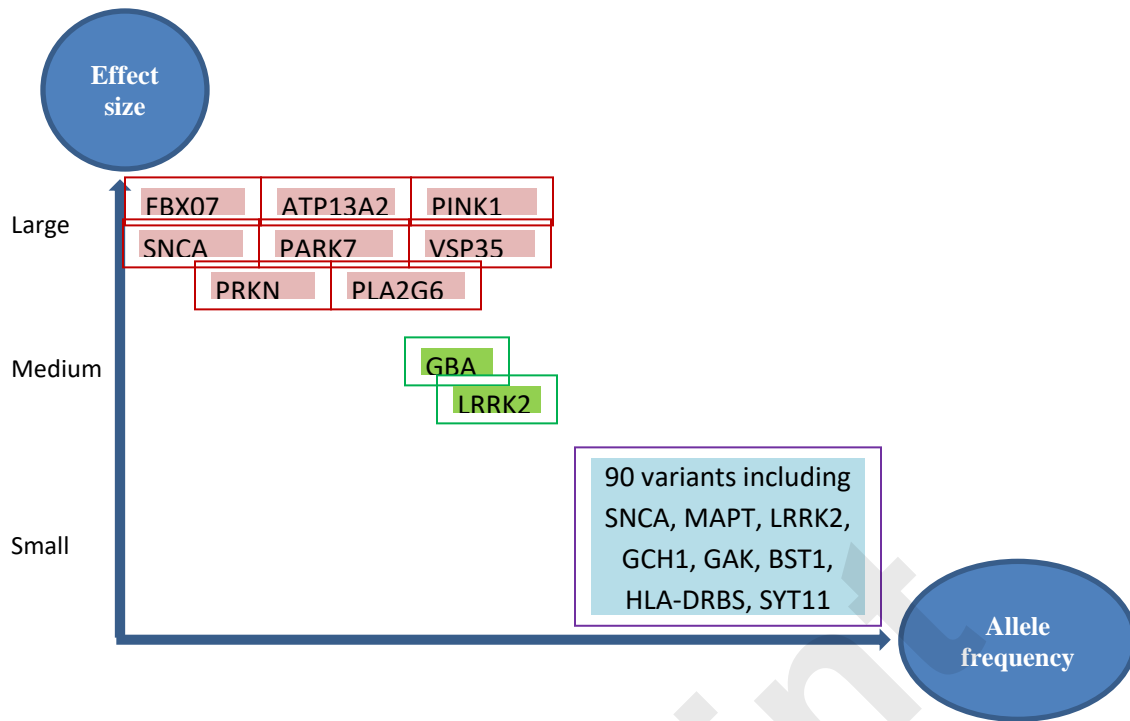


Figure 1: Genetic variants grouped and their severity of influence on the onset of Parkinson's disease according to allele frequency [14]

Parkinson's disease can be stratified according to several Common stratification factors which includes age of onset (early or late-onset PD, after reaching age 50), family history, its presence or absence (familial vs. sporadic PD) and the presence of disease-causing genetic variants (monogenic vs. unknown reason of PD) [15].

Numerous studies indicated that altered pressures resulting from mitochondrial dysfunction are two important cellular stress factors that accelerate the onset of Parkinson's disease [16]. Research proved that the performance of neurons and their role perfectly depends on the quality of mitochondria and their vital dynamics, and therefore any change in the activity and function of mitochondria leads to the death of neurons [17]. These results were reached by performing an autopsy in a brain sample collected from animal models and patients with Parkinson's disease, where it was discovered that the activity and function of mitochondria were diminished, especially in the first complex activity [18]. In addition, mitochondria help in cellular fragmentation, and therefore, it is necessary to constantly examine the dysfunctional organelles

[19]. Mitochondria also stimulate the synaptic activity of neurons, especially at the terminal end of the cells, through the optimal distribution of energy to the cellular organelles according to the energy needs of neurons [19].

From a therapeutic point of view, dopamine (DA) is an important substance in the treatment of Parkinson's disease and therefore the current treatment strategy for Parkinson's disease is based on restoring an optimal level of dopamine (DA) and preserving the signaling pathways associated with it. Therefore, in the treatment strategy patients are given Levodopa drug [known as L-DOPA (L-3, 4-dihydroxyphenylalanine)], as it is the precursor to dopamine [20]. L-DOPA slows down the progression of Parkinson's disease. However, the use of L-DOPA in the treatment of PD is not recommended in the long term because high doses of L-DOPA increase the risk of developing dyskinesia in patients with Parkinson's disease [21]. Moreover, it was found that giving L-DOPA for a long time increases the side effects represented in problems in the heart, blood vessels and the digestive system. On the other hand, L-DOPA was found to be preferable in combination with carbidopa, a peripheral decarboxylase inhibitor. So when carbidopa is given combined with L-DOPA, the side effects of L-DOPA can be greatly reduced [20].

Recently, there is increasing interest in discovering therapeutic schemes that improve mitochondrial function and improve ROS by using natural compounds that exhibit very low side effects [22]. Certain studies showed that use of natural plant components collected from the environment proved that plant extracts have a beneficial effect on Parkinson's patients [23-25]. Although the exact molecular mechanism of action is not fully understood, one of the most important aims of using these extracts against Parkinson's disease is to improve ROS production, [23]. This review will discuss some herbs that are highly effective in improving the ratio of ROS in cells and thus protecting nerve cells from damage. The most imperative herbal medicinal plants are: *Mucuna pruriens*, *Bacopa monnieri*, *Curcuma Longa*, *Withania somnifera*, *Camellia sinensis* and *Gingko Biloba*. The use of such plants will improve the development of treatment strategies for Parkinson's patients

Etiology of Parkinson's disease

Awareness the causes of Parkinson's disease still needs a lot of facts to know. On the other hand, genetic and environmental factors play a major role in the occurrence of the disease [26, 27]. It is known that advanced age or reaching old age is one of the most important initial indicators of the possibility of Parkinson's disease, because it is rare for the disease to occur at an early age [28, 29]. The explanation may be that with advancing age and reaching old age, failure occurs in most of the cellular and physiological vital processes, and therefore the dopaminergic neurons do not play their natural role, which exposes them to damage and abnormal pathological effects. The association of neurons with type-L calcium channels is indicative of dopaminergic cell senescence [30].

One of the most reasons for the spread of Parkinson's disease is the increase in the development of life, as the increase in industry, which is one of the factors that increase environmental pollution (increased carbon monoxide, organic solvents, and carbon disulfide), is one of the main factors in the emergence of the disease (Figure 2). On the other hand, increased rates of viral and bacterial infections in poor health areas were found to be one of the reasons for the increase in Parkinson's disease [31]. Also, the increased use of pesticides may increase the risk of developing neuronal diseases [32]. Some pesticides such as rotenone and paraquat, which are widely used in agriculture, have shown a significant ability to cause dopaminergic cell death in the substantia nigra (Figure 3) of small laboratory animals [33].

On the other hand, exercise and the use of certain anti-hypertensive and anti-inflammatory drugs (related to the anti-calcium mechanism) reduce the risk of developing Parkinson's disease although their role needs much explanation [34, 35].

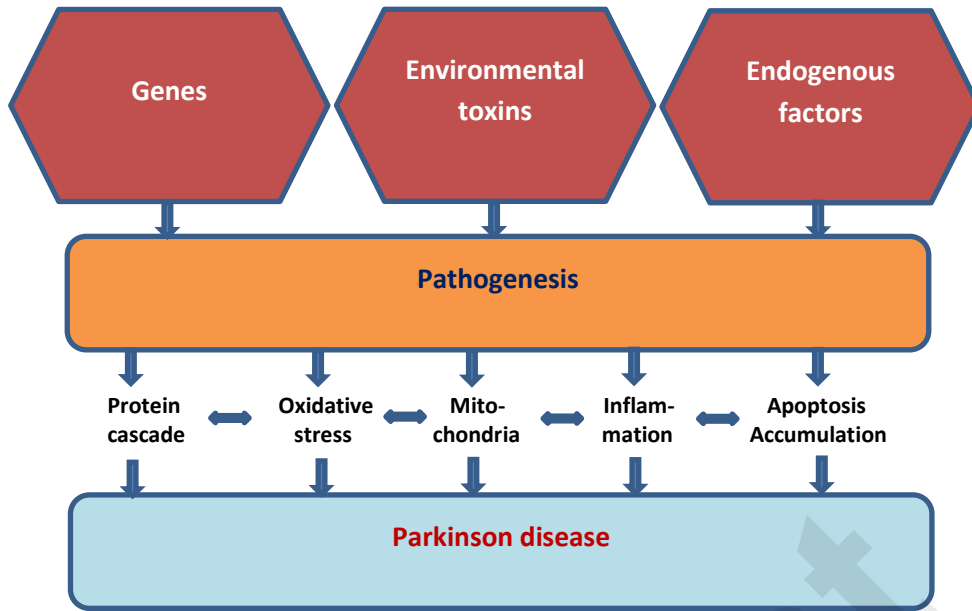


Figure 2: Etiology of Parkinson's disease

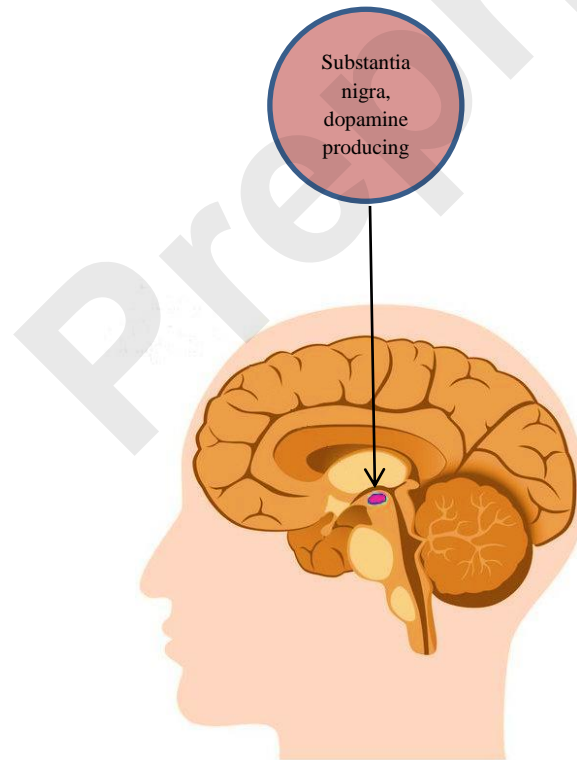


Figure 3: Pathology of Parkinson's disease (dopaminergic cell death in the substantia nigra)

Pathogenesis of Parkinson's disease

The pathological description of Parkinson's disease is a group of disabling motor and motor abnormalities, which include tremor, bradykinesia, imbalance, and muscle stiffness. These symptoms may be related or separate to a decrease in the level of dopamine in several parts of the brain, including the putamen, striatum, and caudate nucleus, which results from the deterioration or damage of dopaminergic neurons, which are the main causes of Parkinson's disease. The disease begins when dopamine levels drop to levels of up to 80%-85% in the striatum and most neurons (50%-60% of neurons) are destroyed. Besides, there are other factors associated with these manifestations in disease events, such as mitochondrial dysfunction due to increased oxidative stress. Also, what are known as Lewy bodies form as a result of increased levels of proteins in neuronal cytoplasm and increased neuronal loss [36, 37].

Studies have shown that Lewy bodies are associated with signs of Parkinson's disease. Where research has proven that Lewy bodies are one of the hallmarks of neurological diseases, when making histological analyzes of alpha-cell disorders. On the other hand, the formation of Lewy bodies takes place through complex processes, and the role of Lewy bodies in the occurrence of alpha-synucleopathies needs complex explanations [38]. It was also found that the process of forming Lewy bodies in the brain tissue takes many years in the human brain [39]. Thus, some studies that showed the difficulty of forming Lewy bodies in laboratory animals is due to the time factor that is needed in order to facilitate obtaining them in histological studies, as the life spans of rodents are shorter than that of humans [40]. This indicates that the appearance of Parkinson's disease is easily confirmed when Lewy bodies are present in histological studies (Figure 4).

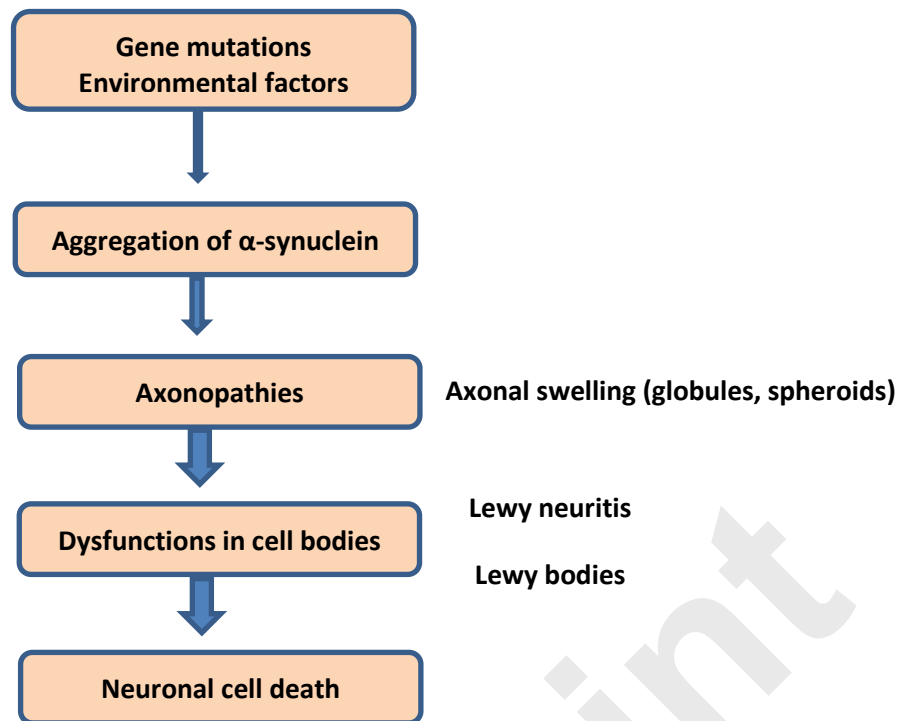


Figure 4: Pathogenesis of Parkinson's disease which is associated with the formation of Lewy neuritis and Lewy bodies in brain tissue.

Recent advancements in understanding the pathophysiology of Parkinson's

There is some evidence showing that Parkinson's disease is a syndrome consisting of pathological conditions and not a single clinical entity, and therefore the treatment strategy requires a specific therapeutic approach [41]. In addition, there may be subtypes such as the gait difficulty subtype (PIGD), postural instability, and the dominant subtype of tremor within PD [42]. Moreover, the different genetic forms of Parkinson's disease show distinct and unique phenotypes such as the presence of dystonia and other movement disorders, response to deep brain stimulation (DBS), development of complications of levodopa treatment, and a degree of associated cognitive abilities [43]. Therefore, identifying different phenotypes and understanding the basic pathological mechanisms through genetic analysis helps facilitate access to effective treatment strategies for Parkinson's disease [44]. This review is considered one of the studies that

help in finding experimental treatments using natural compounds which are cheap, safe and available in the surrounding environment [45].

Potential mechanisms of natural products exert their neuroprotective impacts based on the oxidative stress, inflammation, and mitochondrial function

It is known that the neuropathological feature of Parkinson's disease consists of the accumulation of Lewy bodies and protein aggregates within nerve cells and Lewy neuritis. This occurs as a result of mistreatment of the protein alpha-synuclein and its aggregated forms and also as a result of the gradual loss of nigrostriatal neurons [46]. Recently, natural products have received great attention in the treatment of neurological diseases, including Parkinson's disease, as a result of their important biological and medical properties [47, 48]. There are three main biological processes are involved in the development of neurological diseases, including Parkinson's disease: inflammatory dysfunction, oxidative stress, and mitochondrial dysfunction (Figure 5) [49]. Literatures have shown that oxidative stress is mainly involved in the onset of Parkinson's disease, Alzheimer's disease, and other neurological diseases. Oxidative stress plays an important role in catastrophic neurodegeneration as a result of stimulating the increase and attack of free radicals on neurons [50, 51].

On the other hand, the appearance of oxidative stress is due to a lack of antioxidant defense capacity and the formation of reactive oxygen species (ROS). As a result of mitochondrial dysfunction cell damage, and impaired DNA repair system occur [52]. It was also found that oxidative stress is one of the most important biological processes in the onset of Alzheimer's disease as a result of stimulating tau protein phosphorylation and exacerbating the generation and aggregation of amyloid beta ($A\beta$) [53, 54].

Another biological process that contributes to the emergence of Parkinson's disease is the process of neuroinflammation. Pathways of neuroinflammation include the adaptive and innate immune system of the central nervous system, leading to neurodegeneration [55, 56]. It has been found that microglia in the central nervous system are the main component of the innate immune response. In neurological diseases, in response to pathological changes in the nervous system, microglia undergo morphological changes, and these cells secrete a different group of

inflammatory mediators, which include chemicals, cytokines, and cytotoxic molecules. However, inflammatory mediators function by allowing astrocytes to respond to survival and compensation in response to growth factor and to the process of repairing secondary inflammation [57, 58].

Mitochondrial dysfunction is one of the biological factors that contribute to the emergence of Parkinson's disease and other neurological diseases. It is known that oxidative phosphorylation occurs in mitochondria and helps maintain a low concentration of Ca^{2+} ions in the cytosol [59]. However, when the oxidative phosphorylation process is disrupted, it leads to an increase in ROS levels and leads to excessive absorption of calcium ions, which leads to the opening of mitochondrial pores and a decrease in the function of the mitochondrial membrane [60]. The results have proven that the deficiency of compound I in the substantia nigra of Parkinson's patients is caused by mitochondrial dysfunction [59, 60]. It was also found that some mitochondrial defects, such as platelets and skeletal muscle, and the appearance of some lymphomas, also play a secondary role in the emergence of Parkinson's disease [61].

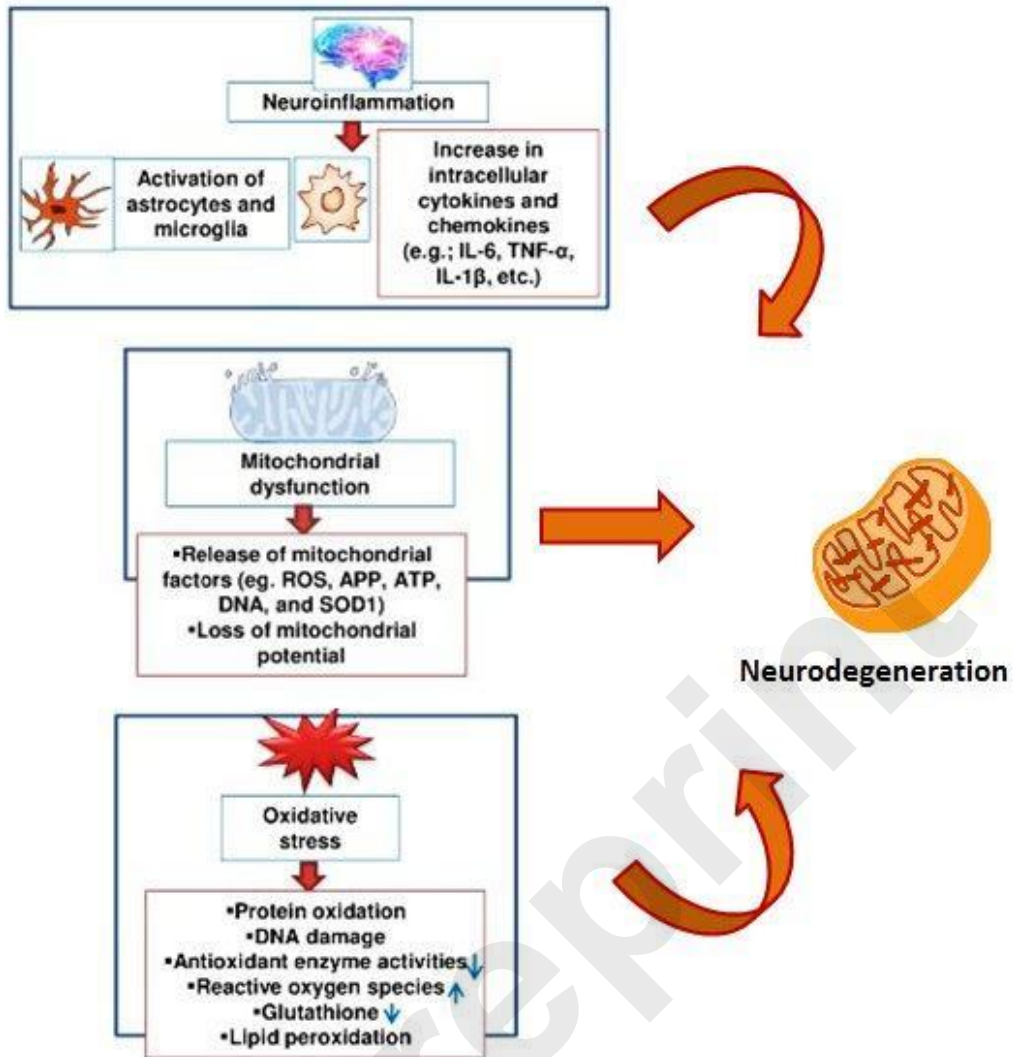


Figure 5: Major biological processes involved in the neurodegeneration including oxidative stress, inflammatory and mitochondrial dysfunctions [62]

Activity of Several Natural Products against neurodegeneration

Medicinal plant extracts against Parkinson's disease

Several plant extracts exhibiting effective therapeutic impact against Parkinson disease are summarized in Table 1.

Water hyssop (*Bacopa monnieri*)

This plant is belonging to the creeping perennial herbaceous family and has great medicinal value. These plants possess known medicinal properties such as anti-inflammatory [63], antioxidant [64], protecting neurons [65], antimicrobial [63], and enhancing memory [66]. Moreover, it was found that the extract of WH plant has great benefit in strengthening cognitive functions [67]. Among experiments were carried out on Parkinson's disease in animal models exposed to toxins or genetically modified animal models, the results showed that WH extract given orally for 4 weeks with 15 mg/kg body weight shows an anti-Parkinson's disease effect [68]. It was also found that the Parkinson's model of mice and *Drosophila* showed similar results when exposed to rotenone and treated with this extract (5 mg/kg b.w. once daily for 7 days) [69] and it reduced apoptosis and oxidative stress induced by rotenone [70].

According to the previous results, we can conclude that WH plant extract provides clear potential as a natural drug to improve function of the neurons and as an anti-Parkinson's disease. However, further studies are needed to fully know the mechanism of action of this extract in order to be used as a possible compound against Parkinson's disease.

Velvet bean (*Mucuna pruriens*)

It is a tropical medicinal plant with great pharmacological importance. VB seed has anti-nephropathy, anti-inflammatory and other anti-parasitic and anti-ulcer properties at 350 mg/kg b.wt, 530 mg/kg b.wt, and 700 mg/kg b.wt orally once daily [71]. The importance of VB roots is due to the fact that it contains levodopa [72], which is considered the gold treatment for Parkinson's disease at 14.4 to 720 mg/day of VB. In addition to levodopa, the seeds of the VB plant contain some other components that are involved with levodopa against Parkinson's disease. Some studies on animal models of Parkinson's disease [73, 74] and also on humans [75] (0.1% of VB and their equivalent per 100 g fly food, 1.5–2.5 g of VB, respectively) showed that

the components of VB seeds improve motor behavior. In addition, the clear biological effect of VB seeds against Parkinson's disease is shown to be able to reduce oxidative stress [74] as a result of containing mineral chelates and antioxidants [76].

Indian ginseng (*Withania somnifera*)

This plant is considered as one of the famous medicinal plants in India, where it is used as a medicine to treat several diseases [77]. IG (10 mg/kg/day ginsenoside Rg3 for 21 day) is used to improve learning and memory, a nervous stimulant, and also a sexual stimulant for men [78] [56]. Several studies have also demonstrated the possibility of using the roots of this plant as antioxidants [79], antidepressants [80], anti-cancer [81], anti-inflammatory [79], and enhancing memory [82]. Also, there are several studies that have proven its effectiveness in improving Parkinson's disease at 100 mg/kg body weight IG for 7 or 28 days [83]. IG root extract was also used to reduce oxidative stress resulting from MPTP (1-methyl-4-phenyl-1,2,3,6-tetrahydropyridine) in a mouse model of Parkinson's disease. This effect is due to the fact that IG (100 mg/kg body weight orally for 7 days) increases levels of antioxidant enzymes such as glutathione peroxidase (GPx) and glutathione (GSH) and decrease levels of ROS in the neural cells [84, 85]. Moreover, IG extract increases dopamine levels in brain cells and improves motor function metabolism in a mouse model of Parkinson's disease [83].

Turmeric (*Curcuma longa*)

This plant is a perennial herb and its roots are used in traditional folk medicine in cases of swelling and sprain resulting from accidents in many peoples [86]. The medicinal importance of this herb is that it has anti-inflammatory (1-2 turmeric tablets of a standardized turmeric extract daily for 2 months) [87], antioxidant (500 mg turmeric extract daily for 4 months) [88], antimicrobial (175, 129, 219, 217, 163, 293 and 216 µg/ml against several type of bacteria) [89], antidepressant (30 mg/ml/kg body wt. daily for 4 weeks) [90] and anticancer (4 dose of 8 g turmeric) [91] properties. Turmeric also has protective properties for neuronal damage (30 mg/ml/kg) [90], neuronal death, behavioral deficits (30 mg/kg body wt. for 8 weeks) [92], and brain cell damage (1 and 2 mg/kg, i.v.) [93]. It also has great effectiveness against neurological disorders such as Alzheimer's (10 µmol/L–1 mmol/L) [94] and Parkinson's [95]. One of the most

important bioactive compounds in turmeric plant extract is curcumin, which has antioxidant functions and raises dopamine levels in rat models of Parkinson's disease (up to 1 μ M) [95-97]. Furthermore, an advantage of curcumin is that it shows no toxicity (10 - 400 mg/m²) [98], which provide beneficial opportunities for its use in the treatment of Parkinson's disease.

Ginkgo biloba (*Maidenhair tree*)

Ginkgo biloba (Gb) is one of the herbs that display important medicinal value, especially its seeds, which are considered among the herbs spread in East Asian countries [99]. One of the most important properties of Gb is that it exhibits anti-inflammatory (6 mg/kg for 7 days) [100], antioxidant activity [100], anti-aging and neuroprotective properties (EGb-761 at the doses as indicated every 3 days, up to 2 years old) [101]. It was also found that Gb extract (EGb 761) shows an ability to protect neurons in animal models of Parkinson's disease [102]. It was also found that EGb 761 extract reduces behavioral deficits and improves locomotor activity and behavioral turnover in a rat model of Parkinson's disease [103]. Moreover, Gb extract (EGb 761) increases levels and efficiency of antioxidant enzymes such as catalase, SOD and GSH [104] as well as increases GSH levels. Additionally, Gb extract improved dopamine metabolites and increased its levels, which strengthens its potential role in Parkinson's treatment strategy. Also, numerous studies showed that Gb extract (EGb 761) reduces oxidative stress, improves dopamine level, and increases SOD activity in animal models of Parkinson's disease [105].

***Camellia sinensis* (Green Tea)**

When the Cs tea leaves are subjected to steaming and then drying, the tea turns into green tea, which is known for its well-known health benefits [106]. The importance of Cs tea is due to the fact that it contains polyphenols [107] that have antioxidant properties (50 ppm) [108], antimicrobial (0.25 – 25 μ g/ml) [109], anti-inflammatory (50 mg/kg, 100 mg/kg, and 200 mg/kg orally administered) [110], anticancer (400 mg/day up to 1315 mg/day) [111], anti-arthritic (2–12 g/L for 3 weeks) [112] and anti-neuralgic [113].

It was found that Cs tea leaf extract reduces the risk of Parkinson's disease [114]. It has been discovered an important substance in green tea called catechins, which is the main component of this plant. Moreover, there is another important substance in green tea extract called epigallocatechin-3-gallate (EGCG), which showed a great ability to protect neurons in a mouse

model of Parkinson's disease, as it reduces the risk of MPTP responsible for the onset of Parkinson's disease. The reason appears that EGCG has ability for metal chelating and antioxidant properties [115]. On the other hand, it was found that the treatment of rat model (6-OHDA) for Parkinson's disease by polyphenols improves antioxidation status and inhibits the ROS-NO pathway. Furthermore, polyphenols protect neurons by maintaining increased scavenging free radicals in brain cells [116].

Camellia sinensis (Black Tea)

If Cs tea leaves are fermented and oxidized, black tea is produced, which is widely consumed throughout the world [117]. Black tea contains theaflavin, which has great medicinal value. Theaflavins show those substances present in green tea in terms of their antioxidant capacity (5-40 micromol/L) [118]. It was also found that black tea extract has the property of protecting neurons (8-10 mg/kg/day; ip) [119] in a rat model of Parkinson's disease (6-OHDA) by protecting DA-ergic neurons in brain cells [120]. So far, the neuroprotective mechanism of theaflavin (polyphenols) found in black tea has not been known [118]. Studies have shown that theaflavin is one of the potent types of catechins found in tea leaves (CS) [118]. It was found that theaflavin improves brain cells in a rat model of Parkinson's disease, reducing the risk of MPTP (10 mg; 20 mg; 50 mg/kg b.w) [121]. It was also found that theaflavin reduces apoptosis by reducing the expression of caspase genes (3, 8, and 9) [121].

Strawberry

It has been shown that strawberry fruit contains many antioxidants such as ellagic acid and caffeic acid, some flavonoids (anthocyanins, tannins, catechins, quercetin, and kaempferol), carotenoids, and vitamins [122]. The mechanism of action of strawberries (1 g/kg orally for 3 weeks) in providing protection for neurons and age-induced disability and improving cognitive function comes through the release of dopamine (DA) and calcium content, and enhancing GTPase activity [123, 124].

Table 1: Pharmaceutical activities of plant natural products with neuroprotective capacity

Plant extracts- natural products	Pharmaceutical activities	Animal model	References
Water hyssop (<i>Bacopa monnieri</i>)	Anti-inflammatory Antioxidant Protecting neurons Enhancing memory Strengthening cognitive functions.	Animal models Mice Drosophila	[63-67]
Velvet bean (<i>Mucuna pruriens</i>)	Anti-nephropathy Anti-inflammatory Anti-ulcer properties Improve neurons	Animal models Humans	[73-75]
Indian ginseng (<i>Withania somnifera</i>)	Improve learning and memory Nervous stimulant, Antioxidants Antidepressants Anti-cancer, Anti-inflammatory Enhancing memory	Animal models Mice	[56] [78-83]
Turmeric (<i>Curcuma longa</i>)	Anti-inflammatory Antioxidant Antidepressant Anticancer Improve neurological disorders such as Alzheimer and Parkinson	Mice Rats Human	[87-93]
Gingko biloba (<i>Maidenhair tree</i>)	Anti-inflammatory Antioxidant activity Anti-aging Neuroprotective properties	Animal models	[100-105]

Table 1: Continued

<i>Camellia sinensis</i> (Green Tea)	Antioxidant properties Anti-inflammatory Anticancer Anti-arthritis Anti-neuralgic	Mouse model	[108-113]
<i>Camellia sinensis</i> (Black Tea)	Antioxidant capacity Protecting neurons	Rat model	[118, 119]
Strawberry	Protection for neurons	Rat model	[123, 124].

Active natural products for Parkinson's disease treatment**Botanic sources****Baicalein**

This compound is extracted from the roots of *Scutellaria baicalensis*, a plant of the mint family (Labiatae) [125]. The importance of Baicalein compound (5 or 10 mg/kg) is that it prevents the accumulation of ROS molecules, reduces apoptosis, maintains ATP level, and improves mitochondrial membranes in brain cells when exposed to rotenone, which causes neurotoxicity [126]. It has also been found to enhance 5-HTP and dopamine levels (10 mg/kg) [127].

***Erythrina filotina* extract**

This herb is belonging the plants of the legume family (Fabaceae) and it was found to show a protective effect for nerve cells. It has been also found when nerve cells were treated with 6-OHDA, which causes neurotoxicity, and then treated with *Erythrina velutena* compound, the findings found reduction in neurotoxicity and removal of free radicals. The results indicate that *Erythrina velutena* (0.5 µg/mL) can be used to treat Parkinson's disease [128].

Esveratrol

This compound is extracted from several plants including berries and grapes. It is chemically polyphenolic compound [129]. This compound (90 mg/kg RES) has been administered in animal models of Parkinson's disease and has been shown to prevent oxidative stress, improve neuronal protection and even help with motor deficits [130]. Also, it was found that resveratrol (oral injection of 10, 20 and 40 mg/kg daily for 10 weeks) reduces gene expression of TNF- α and COX-2 genes, prevents chromatin condensation, and maintains mitochondrial vitality [131].

Peganum Haramala extract

This plant is belonging to Syrian rue plant, which is a perennial herbaceous plant that lives in salty soils near seas such as the Mediterranean Sea. When treating animal models of Parkinson's disease with this extract, it (10 mg/kg) works to reduce neuronal apoptosis, reduce muscle stiffness, and prevent oxidation of proteins and lipids in brain cells [132]. The ability of this extract to reduce the symptoms of Parkinson's disease comes from its ability to reduce the activity of angiotensin II, which is responsible for the development of symptoms of Parkinson's disease, and to increase the oxidative stress of neurons [133].

Flavonoids;

Flavonoids are compounds that contain polyphenols, a chemical extracted from many natural plants, which have been used in medicine for several years. Among the flavonoids baicalin, the major metabolite of baicalin (Lamiaceae) is a derivative of *Scutellaria baicalensis*. This compound (25 and 50 mg/kg) prevents neurotoxicity in animal models of Parkinson's disease treated with 6-OHDA. This compound shows neuroprotective functions and reduces lipid oxidation [134]. Other flavonoids include apigenin and lutein (1–5 M luteolin for 30 min before lipopolysaccharide treatment), which protect neurons from neurotoxicity such as inflammation and lipid oxidation [135].

Terpenoids

These compounds are extracted from the *Centella asiatica* plant, which is a medicinal herb found in Asia and some North African countries. These substances are used in the treatment of infections, rheumatoid arthritis, muscular stress and mental insomnia at the concentration of 100 to 200 mg/kg body weight. Among the terpenoids found abundantly in the leaves of this plant: Bornyl acetate, α -pinene, β -pinene and -terpinene are all monoterpenes [136]. These compounds inhibit the enzyme acetylcholinesterase (AChE) activity. Other plants contain terpenoids, such as *C. paniculatus*, which is used to calm the nervous system as an antidepressant [137]. Derivatives of these compounds are also used in the treatment of tumors in nerve cells of the brain, as it reduces the formation of AB, as it inhibits amyloid precursor protein (APP). Also, terpenoids help rats with Parkinson's disease with memory loss due to exposure to scopolamine to recover its memory and learning in good proportions [138].

Phenols

Phenols are chemical compounds found in many plants, the most important of which is the turmeric longa plant. Turmeric longa extract contains the compound curcumin, which has been used in the treatment of aging since ancient times. Turmeric roots contain curcumin, which has important medicinal properties such as anti-inflammatory and antioxidant [139, 140]. Curcumin (200 mg/day to 6 g/day for up to 8 months) has shown neuroprotective properties by increasing levels of glutathione and antioxidant enzymes and decreasing lipid peroxidation in brain tissue of patients with neurological damage [141, 142]. Besides curcumin, some other compounds found in the *Curcuma longa* plant also help protect the damage in the cells of the nervous system resulting from the formation of beta-amyloid attack, such as D-demethoxycin, demethoxycurcumin, and calpain-A [143].

Alkaloids

Alkaloids are extracted from some plants, such as *H. serrata*, which contain the lycopodium alkaloid huperzine A. This compound was tested in animals and cells *in vitro* and was found to inhibit of AChE (0.03 μ M (8 μ g) and 0.06 μ M. (16 μ g) [144]. When using this compound at a concentration of IC₅₀ = 0.08 mM, it stopped the AChE enzyme from working completely [33].

Some other alkaloids, such as Leonurus alkaloid extracted from *Leonurus heterophyllus* (0.2 mg kg⁻¹ for seven days), showed a high ability to protect mitochondria and prevent ROS generation and reduce cytochrome c levels *in vivo* [145]. There are other alkaloids such as berberine, gronelandicin, palmatine, gatorizine, coptisine, and ibererine, which are extracted from the roots of the *Coptis chinensis* plant. These compounds inhibit the action of AChE.

Caffeine

It was found that caffeine in coffee has an effective role against Parkinson's disease. Where it was proved that the caffeine found in *Coffea arabica*, which is widespread in Asian and African countries, shows (at 5 mg/kg i.p. 10 min prior to each MPTP dose) a therapeutic effect in animal models of Parkinson's disease that were exposed to MPTP [146]. It was found that caffeine improves dopaminergic neurons and improves motor and rotational control in rats with Parkinson's disease. It was also found that caffeine works to protect dopaminergic neurons and its metabolites in animal models of Parkinson's disease that were exposed to (6-OHDA) [147].

Marine sources

There are many marine organisms that contain natural chemical compounds that have shown pharmacological effects that can be used to treat many diseases [148].

Archaea

Archea are certain kinds of microorganisms that live in environments with very high temperature or very high salt. These microorganisms contain Zwitterionic organic products (up to 1 mM) that help these organisms to withstand high temperatures and protect the particles of these organisms from damage [149]. In addition, such microorganisms which live in hot environments produce mannosylglycerate (MG). The MG proved significant activity against Parkinson's disease [150].

Bacteria

Marine organisms provide some compounds with broad biological activity [151]. Among these compounds is NP7, which is produced by *Streptomyces* bacteria that live in the marine environment. NP7 compound (0.05 mg/mL) shows antioxidant activity and reduces H₂O₂ damage. NP7 also protects neurons and reduces apoptosis induced by H₂O₂. Piloquinones, isolated from *Streptomyces* sp, have neuroprotective properties [152].

Fungi

Research has shown that some compounds extracted from marine fungi have biological and protective activity against Parkinson's disease. Among these is Neoechinulin A which is an isoprene quinone alkaloid and is extracted from fungal strains *Aspergillus* sp and *Microsporium* sp [153]. Neoechinulin A (0.47 μ M) exhibits neuroprotective activity as it preserves mitochondria, reduces lipid peroxidation, and reduces apoptosis [154]. Another substance called cyclonic acid A is extracted from marine fungi *Aspergillus* ochraceous and *Paecilomyces* sp. This substance (at 25 μ M) reduces apoptosis as a result of inhibiting the gene expression of apoptosis genes [155].

Algae

Among the important marine algae are microalgae of a type *pluvialis* and *Chlorella* *zophingiensis* [156]. Seaweed is characterized by its antioxidant chemical compounds such as carotene and astaxanthin [157]. These compounds (6.5 mg/g) have been shown to have a significant ability to prevent and/or delay Parkinson's disease in rats [158]. Studies have shown that astaxanthin (3mg/kg/day) activates neurons in the mouse brain [159]. Marine carotene (30, 60, and 90 mg/kg) has also been found to exhibit anti-inflammatory and antioxidant effects [160].

Molluscs

Molluscs are important because they contain staurosporin (AM-2282), an important chemical that inhibits the kinase. This substance was first detected in the fungus *Streptomyces*

staurosporeus [161]. Studies have shown that molluscs (at 0.003–0.03 mg/L for 24, 48, and 96 h) of flatworms and sea squirts contain staurosporine (AM-2282) [162], which activates kinase enzymes in primary brain cells and improves their vitality and activity [163]. Also, staurosporin (AM-2282) (3.4 nM) protects neurons from apoptosis and damage [164].

Sea cucumber

Sea cucumber is one of the most important types of marine mollusks, which is characterized by its many vital nutrients [165]. These nutrients activate and treat many neurological diseases, as is known in many countries of the East. Among the important compounds in sea cucumbers, butanol (WBBU) and ethyl acetate (WBEA) were extracted from sea cucumber *Holothuria scabra*. These substances (at 0.4-1.0 g/kg) have demonstrated a high ability to protect neuronal cells, reduce lipid oxidation, and reduce apoptosis in *C. elegans* [166].

Also present in sea cucumber *Cucumaria frondosa* are some important compounds such as SCG-1, SCG-2 and SCG-3 that prevent *Cucumaria frondosa* neuronal damage [167]. Thus, these substances extracted from sea cucumbers [at 4 µg/ml (10 µM)] showed a high ability to protect against Parkinson's disease [167].

Current challenges and limitations in existing Parkinson's disease therapies

Recently, several studies have been conducted to find novel therapeutic tools to treat or alleviate the devastating symptoms of Parkinson's disease, whether motor or non-motor [168, 169]. The therapeutic tools are mainly depending on identifying receptors, DNA and stem cells [169] [174]. Among the recent technologies in treating Parkinson's disease, is nanotechnology which has been used with the aim of delivering molecular drugs in small quantities in the brain to reduce the side effects of various drugs and medications [170]. Through these recent treatment technologies, nanomaterials were delivered through the nose directly to the brain, following specific methods of nanomedicine, in order to meet the challenges associated with treating Parkinson's [170]. However, all of these novel methods are still in the experimental stage to determine their effectiveness and degree of safety.

It is known that nanoparticles (NPs), due to their small size and exclusive properties, have become widely utilized in several fields such as nanocarriers for drugs and nanomedicine [171, 172]. Despite these benefits, NPs show some toxicity possessions to human tissues and cells depending on its various properties such as size [173], shape, functional surfaces [174] and concentration [175]. Several studies have shown that the chemicals involved in the manufacture of NPs during their chemical synthesis are responsible for their high toxicity to human cells [176]. It has also been found that biosynthesis of nanoparticles also shows less toxicity when interacting with cells, compared to those prepared chemically [177]. Therefore, one of the main goals of this review is to shed light on the natural compounds that are known safe and do not show toxicity to human cells.

Future research aspects in neurodegenerative therapy using natural products

Among the recent technologies in treating Parkinson's disease, is nanotechnology which has been used with the aim of delivering molecular drugs in small quantities in the brain to reduce the side effects of various drugs and medications. The rapid progress in nanotechnology and the ability to control the shape and size of nanoparticles, combined with the large number of medicinal plants, makes it possible to find a successful treatment strategy for Parkinson's disease in the near future. Despite this, developing plant nanomedicines to treat neurological diseases is not easy and faces many challenges. Studies have shown that the progress in the clinical results is much lower than success in the pre-clinical results in the extent of response to plant nanomedicines [178]. Among the reasons for the weak response in clinical results are the length of time, cost, and complexity of nanomedicine technology compared to traditional formulation technology, which relies on easy treatment in the form of appropriate doses (whether capsules, tablets, or injections) [179].

Therefore, resolutions must be found to the main issues associated with the clinical development of nanomedicines compared to current treatments, including biocompatibility and safety, large-scale manufacturing, and overall cost effectiveness [180]. Therefore, there is hope that these major issues can be overcome through careful planning to reduce the complexity of

nanomedicine design, and better control over the chemical and physical properties of nanomedicine (e.g., size, shape, and density of nanomaterials). Also, non-toxic, biocompatible and biodegradable compounds must be used to procedure the nanoplatform in clinical trials [179, 180].

Discussion

Until now, the causes of Parkinson's disease are still not completely clear. On the other hand, a lot of research was conducted, which proved that the most important reasons for the emergence of this disease is the occurrence of a clear defect in the vital functions of the mitochondria, as well as the instability of the redox process [181]. To date, there is no drug available that has the ability to stop or slow Parkinson's disease without side effects. As a result, the search for a new drug and the development of a treatment strategy are among the main goals in the treatment of Parkinson's disease. Therefore, this review article aims to discuss the role of a number of natural herbs that have been dealt with many studies, and which have proven to be useful in treating or preventing Parkinson's disease.

A number of natural extracts and active substances from plants and marine organisms were discussed in terms of their ability to protect neurons and reduce toxicity resulting from drugs that were used to produce animal models of Parkinson's disease. On the other hand, the safety of these extracts and active substances as well as their lack of side effects when ingested were discussed. This review article discusses a few numbers of these extracts and natural active substances, depending on their safety and low toxicity, as well as their effectiveness in protecting mitochondria and reducing oxidative stress and inflammation. Any defect in the mitochondrial function and increased oxidative stress may lead directly to the events of Parkinson's disease (Figure 6). Each plant extract was discussed separately and the extent to which it contains effective substances in protecting nerve cells and brain tissues. Also, the ability of each extract or natural materials was discussed in terms of the availability of benefits, whether on animal models or on patients as a result of their genetic background to Parkinson's disease or those who were injured as a result of exposure to toxic chemicals such as MPTP (1-methyl-4-phenyl-1,2,3,6-tetrahydropyridine), Rotenone, PQ (paraquat) and other toxic substances that cause Parkinson's

disease. It has been proven that most of these effective natural extracts or substances provide better efficacy and protection when compared to using the treatment known as levodopa.

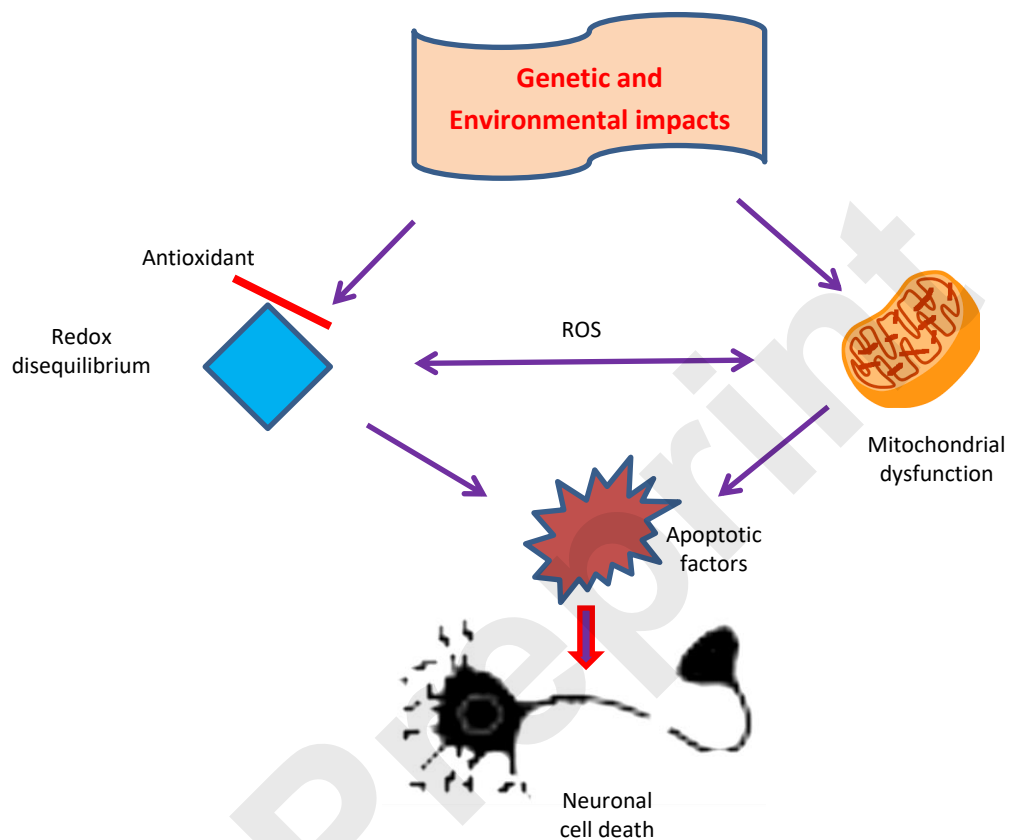


Figure 6: Pathway of Parkinson's disease

In recent years, Interest in phytochemicals has increased because they have shown excessive safety for patients in clinical studies compared to synthetic chemicals that have shown high toxicity and their ability to cause some serious health disorders [182, 183]. Polyphenols are among the antioxidant phytochemicals that have been successfully used in nutritional or oral therapies. Polyphenols have become excellent options for their ability to fight free radicals that cause oxidative damage to nerve cells [184, 185]. While the clinical trials that used

phytochemicals did not prove any side effects of these materials, such research is still in its initial stages compared to the clinical trials that used synthetic chemicals. Many phytochemicals are characterized by their ability to cross the blood-brain barrier and enter brain tissues with relative ease due to their chemical properties, such as being naturally lipophilic [186]. Moreover, phytochemicals offer faster metabolism, enhanced bioavailability, and better affinity for receptors. Therefore, it makes it easier for the patient to speed up the process of nerve cell function and reduce the effects of the disease symptoms if it is taken regularly and consistently [187-189]. As a result of the importance of these natural plant materials in treating Parkinson's disease and other neurological diseases, more research must be conducted in real life to investigate the effectiveness of plant extracts and active ingredients in treating such diseases. Increasing the intensity of conducting such experiments using natural materials will greatly help in a more in-depth understanding and interpretation of the components of natural extracts, their mechanism of action, and their effect on nerve cells.

Conclusion

This review provides useful information for the use of natural substances regarding toxicity, potency, or pharmacological significance in the way of therapeutic pathway of Parkinson's disease. It was observed that most of these natural substances that were selected and discussed in this review work to protect the dopaminergic neurons in the Substantia Nigra region of the brain, as they activate the mitochondrial function in these cells. The present report demonstrated the therapeutic ability of natural compounds to improve mitochondrial function and reducing the generation of reactive oxygen species, which show very low side effects of these compounds. Therefore, many studies have proved that the use of natural plant components has a beneficial effect on Parkinson's patients. Even though the exact molecular mechanism of action is not fully understood, one of the most important goals of using these extracts against Parkinson's disease is to improve mitochondrial function in producing reactive oxygen species and thus protecting neurons from damage. Although this review provides more important information for Parkinson's disease and the possibility of providing natural materials to reduce the damage that occurs in nerve cells, it still needs the following points: (1) Providing the chemical components of each plant or animal extract, (2) Providing the mechanism of action of each extract, in terms of molecular and biological pathways associated with it, (3) Providing information on the

effectiveness and safety of each compound of the extracts against Parkinson's disease, (4) Providing therapeutic results for each compound on patients by conducting many clinical studies and not being satisfied with the results obtained from animal models (*in vivo*) or cells-lines (*in vitro*) for Parkinson's disease. All this information will help pharmacologists and physicians to develop new strategies in the development of Parkinson's disease treatment.

CONFLICT OF INTEREST

The author declared that present study was performed in absence of any conflict of interest.

ACKNOWLEDGEMENT

The author is grateful to the Faculty of Science, University of King Abdulaziz, Saudi Arabia, for unlimited help and support to carry out these experiments.

AUTHOR CONTRIBUTIONS

The paper has been completely written, edited, and reviewed by the corresponding author (AHB)

References

- [1] De Lau L, Breteler M. Epidemiology of Parkinson's disease. *Lancet Neurol*. 2006; 5: 525–35.
- [2] Bostantjopoulou S, Katsarou Z, Karakasis C, Peitsidou E, Milioni D, Rossopoulos N. Evaluation of non-motor symptoms in Parkinson's Disease: An underestimated necessity. *Hippokratia* 2013; 17: 214–9.
- [3] Johansen KK, Waro BJ, Aasly JO. Olfactory dysfunction in sporadic Parkinson's disease and LRRK2 carriers. *Acta Neurol Scand*. 2014; 129: 300–306.
- [4] Koga S, Sekiya H, Kondru N, Ross OA, Dickson DW. Neuropathology and molecular diagnosis of Synucleinopathies. *Mol Neurodegener* 2021; 16(1): 83.
- [5] Jia F, Fellner A, Kumar KR. Monogenic Parkinson's Disease: Genotype, Phenotype, Pathophysiology, and Genetic Testing. *Genes (Basel)* 2022; 13(3): 471.
- [6] von Linstow CU, DeLano-Taylor M, Kordower JH, Brundin P. Does Developmental Variability in the Number of Midbrain Dopamine Neurons Affect Individual Risk for Sporadic Parkinson's Disease? *J. Parkinsons Dis*. 2020; 10: 405–411.
- [7] Ascherio A, Schwarzschild MA. The epidemiology of Parkinson's disease: Risk factors and prevention. *Lancet Neurol*. 2016; 15: 1257–1272.
- [8] Breckenridge CB, Berry C, Chang ET, Sielken RL, Mandel JS. Association between Parkinson's Disease and Cigarette Smoking, Rural Living, Well-Water Consumption,

- Farming and Pesticide Use: Systematic Review and Meta-Analysis. *PLoS ONE* 2016; 11: e0151841.
- [9] Han Y, Wu D, Wang Y, Xie J, Zhang Z. Skin alpha-synuclein deposit patterns: A predictor of Parkinson's disease subtypes. *EBioMedicine* 2022; 80: 104076.
- [10] Liao Q, Li NN, Mao XY, et al. MTHFR C667T variant reduces risk of sporadic Parkinson's disease in ethnic Chinese. *Acta Neurol Scand.* 2014; 130: e30–4.
- [11] Wang Z, Liu X, Yang BZ, Gelernter J. The role and challenges of exome sequencing in studies of human diseases. *Front Genet.* 2013; 4:160.
- [12] Nalls MA, Blauwendraat C, Vallerga CL, Heilbron K, Bandres-Ciga S, Chang D, Tan M, Kia DA, Noyce AJ, Xue A, et al. Identification of novel risk loci, causal insights, and heritable risk for Parkinson's disease: A meta-analysis of genome-wide association studies. *Lancet Neurol.* 2019; 18: 1091–1102.
- [13] Goldman SM, Marek K, Ottman R, Meng C, Comyns K, Chan P, Ma J, Marras C, Langston JW, Ross GW, et al. Concordance for Parkinson's disease in twins: A 20-year update. *Ann Neurol.* 2019; 85: 600–605.
- [14] Day JO, Mullin S. The Genetics of Parkinson's Disease and Implications for Clinical Practice. *Genes (Basel)* 2021; 12(7): 1006.
- [15] Correia Guedes L, Mestre T, Outeiro TF, Ferreira JJ. Are genetic and idiopathic forms of Parkinson's disease the same disease? *J Neurochem.* 2020; 152: 515–522.
- [16] Jiang T, Sun Q, Chen S. Oxidative stress: a major pathogenesis and potential therapeutic target of antioxidative agents in Parkinson's disease and Alzheimer's disease. *Prog Neurobiol.* 2016; 147: 1–19.
- [17] Michel PP, Hirsch EC, Hunot SP. Understanding dopaminergic cell death pathways in Parkinson disease. *Neuron.* 2016; 90: 675–691.
- [18] Ye H, Robak LA, Yu M, Cykowski M, Shulman JM. Genetics and Pathogenesis of Parkinson's Syndrome. *Annu Rev Pathol.* 2023; 18: 95-121.
- [19] Verstreken P, Ly CV, Venken KJT, Koh TW, Zhou Y, Bellen HJ. Synaptic mitochondria are critical for mobilization of reserve pool vesicles at *Drosophila* neuromuscular junctions. *Neuron.* 2005; 47: 365–378.
- [20] Yuan H, Zhang ZW, Liang LW, Shen Q, Wang XD, Ren SM, et al. Treatment strategies for Parkinson's disease. *Neurosci Bull.* 2010; 26: 66–76.
- [21] LeWitt PA, Fahn S. Levodopa therapy for Parkinson disease a look backward and forward. *Neurology* 2016; 86: S3–S12.
- [22] Connolly BS, Lang AE. Pharmacological treatment of Parkinson disease: a review. *JAMA.* 2014; 311: 1670–1683.
- [23] Sarrafchi A, Bahmani M, Shirzad H, Rafieian-Kopaei M. Oxidative stress and Parkinson's disease: new hopes in treatment with herbal antioxidants. *Curr Pharm Des.* 2016, 22: 238–246.
- [24] Van der Merwe C, Van Dyk HC, Engelbrecht L, van der Westhuizen FH, Kinnear C, Loos B, et al. Curcumin rescues a PINK1 knock down SH-SY5Y cellular model of Parkinson's disease from mitochondrial dysfunction and cell death. *Mol Neurobiol.* 2017; 54: 2752–2762.
- [25] Yadav SK, Rai SN, Singh SP. *Mucuna pruriens* reduces inducible nitric oxide synthase expression in Parkinsonian mice model. *J Chem Neuroanat.* 2017; 80: 1–10.
- [26] Schapira AH, Tolosa EJNRN. Molecular and clinical prodrome of Parkinson disease: Implications for treatment. *Nat Rev Neurol.* 2010; 6: 309–317.

- [27] Schapira AJE. Challenges to the development of disease-modifying therapies in Parkinson's disease. *Eur J Neurol*. 2011; 18: 16–21.
- [28] Sharma R, Martins N. Telomeres, DNA damage and ageing: Potential leads from ayurvedic rasayana (Anti-Ageing) drugs. *J Clin Med*. 2020; 9(8): 2544.
- [29] Sharma R, Prajapati PK. Predictive, preventive and personalized medicine: Leads from ayurvedic concept of prakriti (human constitution). *Curr Pharmacol Rep*. 2020; 6: 441–45.
- [30] Surmeier DJ, Guzman JN, Sanchez-Padilla JJC. Calcium, cellular aging, and selective neuronal vulnerability in Parkinson's disease. *Cell Calcium*. 2010; 47: 175–182.
- [31] Tellier JM, Kalejs NI, Leonhardt BS, Cannon D, Höök TO, Collingsworth PD. Widespread prevalence of hypoxia and the classification of hypoxic conditions in the Laurentian Great Lakes. *J Gt Lakes Res*. 2022; 48: 13–23.
- [32] Richardson JR, Shalat S L, Buckley B, Winnik B, O'Suilleabhain P, Diaz- Arrastia R, et al. Elevated serum pesticide levels and risk of Parkinson disease. *Arch Neurol*. 2009; 66: 870–875.
- [33] Xiao XQ, Zhang HY, Tang XCJJ. Huperzine A attenuates amyloid β -peptide fragment 25-35-induced apoptosis in rat cortical neurons via inhibiting reactive oxygen species formation and caspase-3 activation. *J Neurosci Res*. 2002; 67: 30–36.
- [34] Ascherio, A., Zhang, S. M., Hernán, M. A., Kawachi, I., Colditz, G. A., Speizer, F. E., et al. Prospective study of caffeine consumption and risk of Parkinson's disease in men and women. *Ann Neurol*. 2001; 50, 56–63.
- [35] Warner TT, Schapira AH. Genetic and environmental factors in the cause of Parkinson's disease. *Ann Neurol*. 2003; 53: S16–S25.
- [36] Luo C, Song W, Chen Q, Zheng Z, Chen K, Cao B, et al. Reduced functional connectivity in early-stage drug-naive Parkinson's disease: A restingstate fMRI study. *Neurobiol Aging*. 2014; 35: 431–441.
- [37] Prodoehl J, Burciu RG, Vaillancourt DEJ. Resting state functional magnetic resonance imaging in Parkinson's disease. *Curr Neurol Neurosci Rep*. 2014; 14: 448.
- [38] Jellinger KA. Formation and development of Lewy pathology: A critical update. *J Neurol*. 2009; 256: 270–279.
- [39] Wakabayashi K, Tanji K, Odagiri S, Miki Y, Mori F, Takahashi H. The Lewy body in Parkinson's disease and related neurodegenerative disorders. *Mol Neurobiol*. 2013; 47: 495–508.
- [40] Reiman EM, Langbaum JB, Fleisher AS, Caselli RJ, Chen K, Ayutyanont N, Quiroz YT, Kosik KS, Lopera F, Tariot PN. Alzheimer's prevention initiative: A plan to accelerate the evaluation of presymptomatic treatments. *J Alzheimer's Dis*. 2011; 26: 321–329
- [41] Tarakad A, Jankovic J. Recent advances in understanding and treatment of Parkinson's disease. *Fac Rev*. 2020; 9: 6.
- [42] Thenganatt MA, Jankovic J. Parkinson disease subtypes. *JAMA Neurol*. 2014; 71(14): 499–504.
- [43] Domingo A, Klein C. Genetics of Parkinson disease. *Handb Clin Neurol*. 2018; 147: 211–27.
- [44] Bandres-Ciga S, Diez-Fairen M, Kim JJ, et al. Genetics of Parkinson's disease: An introspection of its journey towards precision medicine. *Neurobiol Dis*. 2020; 137: 104782.

- [45] Ysselstein D, Shulman JM, Krainc D. Emerging links between pediatric lysosomal storage diseases and adult parkinsonism. *Mov Disord.* 2018; 34(5): 614–24.
- [46] Shahmoradian SH, Lewis AJ, Genoud C, Hench J, Moors TE, Navarro PP, Castano-Diez D, Schweighauser G, Graff-Meyer A, Goldie KN, et al. Lewy pathology in parkinson's disease consists of crowded organelles and lipid membranes. *Nat. Neurosci.* 2019; 22: 1099–1109.
- [47] Obeso JA, Stamelou M, Goetz CG, Poewe W, Lang AE, Weintraub D, Burn D, Halliday GM, Bezard E, Przedborski S, et al. Past, present, and future of parkinson's disease: A special essay on the 200th anniversary of the shaking palsy. *Mov. Disord.* 2017; 32: 1264–1310.
- [48] Grieco M, Giorgi A, Gentile MC, d'Erme M, Morano S, Maras B, Filardi T. Glucagon-like peptide-1: A focus on neurodegenerative diseases. *Front. Neurosci.* 2019; 13: 1112.
- [49] Golpich M, Amini E, Mohamed Z, Azman Ali R, Mohamed Ibrahim N, Ahmadiani A. Mitochondrial dysfunction and biogenesis in neurodegenerative diseases: Pathogenesis and treatment. *CNS Neurosci. Ther.* 2017; 23: 5–22.
- [50] Rahman MH, Bajgai J, Fadriuela A, Sharma S, Trinh Thi T, Akter R, Goh SH, Kim CS, Lee KJ. Redox effects of molecular hydrogen and its therapeutic efficacy in the treatment of neurodegenerative diseases. *Processes* 2021; 9: 308.
- [51] Ullah R, Khan M, Shah SA, Saeed K, Kim MO. Natural antioxidant anthocyanins-a hidden therapeutic candidate in metabolic disorders with major focus in neurodegeneration. *Nutrients* 2019; 11: 1195.
- [52] Singh A, Kukreti R, Saso L, Kukreti S. Oxidative stress: A key modulator in neurodegenerative diseases. *Molecules* 2019; 24: 1583.
- [53] Buendia I, Michalska P, Navarro E, Gameiro I, Egea J, Leon R. Nrf2-are pathway: An emerging target against oxidative stress and neuroinflammation in neurodegenerative diseases. *Pharmacol. Ther.* 2016; 157: 84–104.
- [54] Gelders G, Baekelandt V, Van der Perren A. Linking neuroinflammation and neurodegeneration in parkinson's disease. *J. Immunol. Res.* 2018; 2018: 4784268.
- [55] Leszek J, Barreto GE, Gasiorowski K, Koutsouraki E, Avila-Rodrigues M, Aliev G. Inflammatory mechanisms and oxidative stress as key factors responsible for progression of neurodegeneration: Role of brain innate immune system. *CNS Neurol. Disord. Drug Targets* 2016; 15: 329–336.
- [56] Stephenson J, Nutma E, van der Valk P, Amor S. Inflammation in cns neurodegenerative diseases. *Immunology* 2018; 154: 204–219.
- [57] Thurgur H, Pinteaux E. Microglia in the neurovascular unit: Blood-brain barrier-microglia interactions after central nervous system disorders. *Neuroscience* 2019; 405: 55–67.
- [58] Voet S, Prinz M, van Loo G. Microglia in central nervous system inflammation and multiple sclerosis pathology. *Trends Mol. Med.* 2019; 25: 112–123.
- [59] Cardenas C, Lovy A, Silva-Pavez E, Urra F, Mizzi C, Ahumada-Castro U, Bustos G, Jana F, Cruz P, Farias P, et al. Cancer cells with defective oxidative phosphorylation require endoplasmic reticulum-to-mitochondria Ca²⁺ transfer for survival. *Sci. Signal.* 2020; 13: eaay1212.
- [60] Panov A, Dikalov S, Shalbuyeva N, Hemendinger R, Greenamyre JT, Rosenfeld J. Species- and tissue-specific relationships between mitochondrial permeability transition and generation of ros in brain and liver mitochondria of rats and mice. *Am. J. Physiol. Cell Physiol.* 2007; 292: C708–C718.

- [61] Kent JA, Patel V, Varela NA. Gender disparities in health care. *Mt. Sinai J. Med.* 2012; 79: 555–559.
- [62] Rahman H, Bajgai J, Fadrique A, Sharma S, Trinh TT, Akter R, Jeong YJ, Goh SH, Kim C SK, Lee KJ. Therapeutic Potential of Natural Products in Treating Neurodegenerative Disorders and Their Future Prospects and Challenges. *Molecules* 2021; 26(17): 5327.
- [63] Mathur A, Verma SK, Purohit R, Singh SK, Mathur D, Prasad G, et al. Pharmacological investigation of *Bacopa monnieri* on the basis of antioxidant, antimicrobial and anti-inflammatory properties. *J Chem Pharm Res.* 2010; 2: 191–198.
- [64] Kumar S, Mondal AC. Neuroprotective, neurotrophic and anti-oxidative role of *Bacopa monnieri* on CUS induced model of depression in rat. *Neurochem Res.* 2016; 41: 3083–3094.
- [65] Uabundit N, Wattanathorn J, Mucimapura S, Ingkaninan K. Cognitive enhancement and neuroprotective effects of *Bacopa monnieri* in Alzheimer's disease model. *J Ethnopharmacol.* 2010; 127: 26–31.
- [66] Morgan A, Stevens J. Does *Bacopa monnieri* improve memory performance in older persons? Results of a randomized, placebo-controlled, double-blind trial. *J Altern Complement Med.* 2010; 16: 753–759.
- [67] Hazra S, Kumar S, Saha GK, Mondal AC. Reversion of BDNF, Akt and CREB in hippocampus of chronic unpredictable stress induced rats: effects of phytochemical. *Bacopa Monnieri.* *Psychiatry Invest.* 2017; 14: 74–80.
- [68] Singh B, Pandey S, Verma R, Ansari JA, Mahdi AA. Comparative evaluation of extract of *Bacopa monnieri* and *Mucuna pruriens* as neuroprotectant in MPTP model of Parkinson's disease. *Ind J Exp Biol.* 2016; 54: 758–766.
- [69] Shinomol GK, Mythri RB, Bharath MMS. *Bacopa monnieri* extract offsets rotenone-induced cytotoxicity in dopaminergic cells and oxidative impairments in mice brain. *Cell Mol Neurobiol.* 2012; 32: 455–465.
- [70] Siddique YH, Mujtaba SF, Faisal M, Jyoti S, Naz, F. The effect of *Bacopa monnieri* leaf extract on dietary supplementation in transgenic *Drosophila* model of Parkinson's disease. *Eur J Integr Med.* 2014; 6: 571–580.
- [71] Concessao P, Bairy LK, Raghavendra AP. Protective effect of *Mucuna pruriens* against arsenic-induced liver and kidney dysfunction and neurobehavioral alterations in rats. *Vet. World* 2020; 13(8): 1555–1566.
- [72] Soumyanath A, Denne T, Hiller A, Ramachandran S, Lynne Shinto L. Analysis of Levodopa Content in Commercial *Mucuna pruriens* Products Using High-Performance Liquid Chromatography with Fluorescence Detection. *J Altern Complement Med.* 2018; 24(2): 182–186.
- [73] Jansen RLM, Brogan B, Whitworth AJ, Okello EJ. Effects of five ayurvedic herbs on locomotor behaviour in a *drosophila melanogaster* parkinson's disease model. *Phytother Res.* 2014; 28: 1789–1795.
- [74] Poddighe S, De Rose F, Marotta R, Ruffilli R, Fanti M, Secci PP, et al. *Mucuna pruriens* (Velvet bean) rescues motor, olfactory, mitochondrial and synaptic impairment in PINK1 B9 *Drosophila melanogaster* genetic model of Parkinson's disease. *PLoS One* 2014; 9: e110802.
- [75] Singhal B, Lalkaka J, Sankhla C. Epidemiology and treatment of Parkinson's disease in India. *Parkinsonism Relat. Disord.* 2003; 9: 105–109.

- [76] Dhanasekaran M, Tharakan B, Manyam BV. Antiparkinson drug—*Mucuna pruriens* shows antioxidant and metal chelating activity. *Phytother Res.* 2008; 22: 6–11.
- [77] Khalil WKB, Ahmed KA, Park MH, Kim YT, Park HH, Abdel-Wahhab MA. The inhibitory effects of garlic and *Panax ginseng* extract standardized with ginsenoside Rg3 on the genotoxicity, biochemical and histological changes induced by Ethylenediaminetetraacetic acid in male rats. *Arch Toxicol.* 2008; 82:183–195.
- [78] Williamson EM. *Major Herbs of Ayurveda.* Churchill Livingstone 2002; 2002.
- [79] Sun GY, Li R, Cui J, Hannink M, Gu Z, Fritsche KL, et al. *Withania somnifera* and its withanolides attenuate oxidative and inflammatory responses and up-regulate antioxidant responses in BV-2 microglial cells. *Neuromol Med.* 2016; 18: 241–252.
- [80] Bhattacharya SK, Bhattacharya A, Sairam K, Ghosal S. Anxiolytic-antidepressant activity of *Withania somnifera* glycowithanolides: an experimental study. *Phytomedicine* 2000; 7: 463–469.
- [81] Rai M, Jogee PS, Agarkar G, Santos CA. Anticancer activities of *Withania somnifera*: current research, formulations, and future perspectives. *Pharm Biol.* 2016; 54: 189–197.
- [82] Shivamurthy S, Manchukonda RS, Ramadas D. Evaluation of learning and memory enhancing activities of protein extract of *Withania somnifera* (*Ashwagandha*) in Wistar albino rats. *Int J Basic Clin Pharmacol.* 2016; 5: 453–457.
- [83] RajaSankar S, Manivasagam T, Sankar V, Prakash S, Muthusamy R, Krishnamurti A, et al. *Withania somnifera* root extract improves catecholamines and physiological abnormalities seen in a Parkinson's disease model mouse. *J Ethnopharmacol.* 2009; 125: 369–373.
- [84] Prakash J, Yadav SK, Chouhan S, Singh SP. Neuroprotective role of *Withania somnifera* root extract in Maneb-Paraquat induced mouse model of parkinsonism. *Neurochem Res.* 2013; 38: 972–980.
- [85] Sankar S, Manivasagam T, Krishnamurti A, Ramanathan M. The neuroprotective effect of *Withania somnifera* root extract in MPTP- intoxicated mice: an analysis of behavioral and biochemical variables. *Cell Mol Biol Lett.* 2007; 12: 473–481.
- [86] Motterlini R, Foresti R, Bassi R, Green CJ. Curcumin, an antioxidant and anti-inflammatory agent, induces heme oxygenase-1 and protects endothelial cells against oxidative stress. *Free Radic Biol Med.* 2000; 28: 1303–1312.
- [87] Bundy R, Walker AF, Middleton RW, Booth J. Turmeric extract may improve irritable bowel syndrome symptomology in otherwise healthy adults: a pilot study. *J Altern Complement Med.* 2004; 10: 1015–1018.
- [88] Srivastava S, Saksena AK, Khattri S, Kumar S, Dagur RS. *Curcuma longa* extract reduces inflammatory and oxidative stress biomarkers in osteoarthritis of knee: a four-month, double-blind, randomized, placebo-controlled trial. *Inflammopharmacology* 2016; 24: 377–388.
- [89] Gunes H, Gulen D, Mutlu R, Gumus A, Tas T, Topkaya AE. Antibacterial effects of curcumin: an *in vitro* minimum inhibitory concentration study. *Toxicol Ind Health* 2016; 32: 246–250.
- [90] Bala K, Tripathy BC, Sharma D. Neuroprotective and anti-ageing effects of curcumin in aged rat brain regions. *Biogerontology* 2006; 7: 81–89.
- [91] Allegra A, Innao V, Russo S, Gerace D, Alonci A, Musolino C. Anticancer activity of curcumin and its analogues: preclinical and clinical studies. *Cancer Invest.* 2017; 35: 1–22.

- [92] Wang Q, Sun AY, Simonyi A, Jensen MD, Shelat PB, Rottinghaus GE, et al. Neuroprotective mechanisms of curcumin against cerebral ischemia-induced neuronal apoptosis and behavioral deficits. *J Neurosci Res.* 2005; 82: 138–148.
- [93] Jiang J, Wang W, Sun YJ, Hu M, Li F, Zhu DY. Neuroprotective effect of curcumin on focal cerebral ischemic rats by preventing blood-brain barrier damage. *Eur J Pharmacol.* 2007; 561: 54–62.
- [94] Garcia-Alloza M, Borrelli LA, Rozkalne A, Hyman BT, Bacskai BJ. Curcumin labels amyloid pathology *in vivo*, disrupts existing plaques, and partially restores distorted neurites in an Alzheimer mouse model. *J Neurochem.* 2007; 102: 1095–1104.
- [95] Mythri RB, Srinivas Bharath MM. Curcumin: a potential neuroprotective agent in Parkinson's disease. *Curr Pharm Des.* 2012; 18: 91–99.
- [96] Motawi TK, Sadik NAH, Hamed MA, Ali SA, Khalil WKB, Ahmed YR. Potential therapeutic effects of antagonizing adenosine A2A receptor, curcumin and niacin in rotenone-induced Parkinson's disease mice model. *Mol. Cell Biochem.* 2020; 465:89–102
- [97] Gouda W , Hafiz NA, Mageed L, Alazzouni AS, Khalil WKB, Afify M, Abdelmaksoud MDE. Effects of nano-curcumin on gene expression of insulin and insulin receptor. *Bull Natl. Res. Cent.* 2019; 43:128
- [98] Storka A, Vcelar B, Klickovic U, Gouya G, Weisshaar S, Aschauer S, et al. Safety, tolerability and pharmacokinetics of liposomal curcumin in healthy humans. *Int J Clin Pharmacol Ther.* 2015; 53: 54–65.
- [99] Chan EWC, Lim YY, Chew YL. Antioxidant activity of *Camellia sinensis* leaves and tea from a lowland plantation in Malaysia. *Food Chem.* 2007; 102: 1214–1222.
- [100] Tulsulkar J, Shah ZA. Ginkgo biloba prevents transient global ischemia-induced delayed hippocampal neuronal death through antioxidant and anti-inflammatory mechanism. *Neurochem Int.* 2013; 62: 189–197.
- [101] Zhou X, Qi Y, Chen T. Long-term pre-treatment of antioxidant Ginkgo biloba extract EGb-761 attenuates cerebral-ischemia-induced neuronal damage in aged mice. *Biomed. Pharmacother.* 2017; 85: 256–263.
- [102] El-Ghazaly MA, Sadik NAH, Rashed ER, Abd-El-Fattah AA. Neuroprotective effect of EGb7611 and low-dose whole-body g-irradiation in a rat model of Parkinson's disease. *Toxicol Ind Health* 2015; 31: 1128–1143.
- [103] Chen L, Zhang C, Han Y, Meng X, Zhang Y, Chu H, Ma H. Ginkgo biloba Extract (EGb) Inhibits Oxidative Stress in Neuro 2A Cells Overexpressing APPsw. *Biomed. Res. Int.* 2019; 2019: 7034983.
- [104] Singh SK, Srivastav S, Castellani RJ, Plascencia-Villa G, Perry G. Neuroprotective and Antioxidant Effect of Ginkgo biloba Extract Against AD and Other Neurological Disorders. *Neurotherapeutics* 2019; 16(3): 666–674.
- [105] Chang KH, Chen CM. The Role of Oxidative Stress in Parkinson's Disease. *Antioxidants (Basel)* 2020; 9(7): 597.
- [106] Cabrera C, Artacho R, Giménez R. Beneficial effects of green tea—a review. *J Am Coll Nutr.* 2006; 25: 79–99.
- [107] Khan N, Mukhtar H. Tea polyphenols for health promotion. *Life Sci.* 2007; 81: 519–533.
- [108] Chen H, Zhang M, Qu Z, Xie B. Antioxidant activities of different fractions of polysaccharide conjugates from green tea (*Camellia Sinensis*). *Food Chem.* 2008; 106: 559–563.

- [109] Thakur P, Chawla R, Goel R, Narula A, Arora R, Sharma RK. Antibacterial activity of aquo-alcoholic extract of *Camellia sinensis* against isolates of carbapenem resistant *Escherichia coli* and food borne pathogens. *Int J Biol Pharm Res.* 2015; 6: 606–616.
- [110] Chen BT, Li WX, He RR, Li YF, Tsoi B, Zhai YJ, et al. Anti-inflammatory effects of a polyphenols-rich extract from tea (*Camellia sinensis*) flowers in acute and chronic mice models. *Oxid Med Cell Longev.* 2012; 2012: 537923.
- [111] Boehm K, Borrelli F, Ernst E, Habacher G, Hung SK, Milazzo S, et al. Green tea (*Camellia sinensis*) for the prevention of cancer. *Cochrane Libr.* 2009; 2009.
- [112] Kim HR, Rajaiah R, Wu QL, Satpute SR, Tan MT, Simon JE, et al. Green tea protects rats against autoimmune arthritis by modulating disease-related immune events. *J Nutr.* 2008; 138: 2111–2116.
- [113] Boadas-Vaello P, Verdú E. Epigallocatechin-3-gallate treatment to promote neuroprotection and functional recovery after nervous system injury. *Neural Regener Res.* 2015; 10: 1390.
- [114] Tanaka K, Miyake Y, Fukushima W, Sasaki S, Kiyohara C, Tsuboi Y, et al. Intake of Japanese and Chinese teas reduces risk of Parkinson's disease. *Parkinsonism Relat Disord.* 2011; 17: 446–450.
- [115] Levites Y, Weinreb O, Maor G, Youdim MBH, Mandel S. Green tea polyphenol (-)-epigallocatechin-3-gallate prevents N-methyl-4-phenyl-1,2,3,6-tetrahydropyridine-induced dopaminergic neurodegeneration. *J Neurochem.* 2001; 78: 1073–1082.
- [116] Guo S, Yan J, Yang T, Yang X, Bezard E, Zhao B. Protective effects of green tea polyphenols in the 6-OHDA rat model of Parkinson's disease through inhibition of ROS-NO pathway. *Biol Psychiatry* 2007; 62: 1353–1362.
- [117] Sharangi AB. Medicinal and therapeutic potentialities of tea (*Camellia sinensis* L.) - a review. *Food Res Int.* 2009; 42: 529–535.
- [118] Leung LK, Su Y, Chen R, Zhang Z, Huang Y, Chen ZY. Theaflavins in black tea and catechins in green tea are equally effective antioxidants. *J Nutr.* 2001; 131: 2248–2251.
- [119] Joghataie MT, Roghani M, Negahdar F, Hashemi L. Protective effect of caffeine against neurodegeneration in a model of Parkinson's disease in rat: behavioral and histochemical evidence. *Parkinsonism Relat Disord.* 2004; 10: 465–468.
- [120] Chaturvedi RK, Shukla S, Seth K, Chauhan S, Sinha C, Shukla Y, et al. Neuroprotective and neurorescue effect of black tea extract in 6-hydroxydopamine-lesioned rat model of Parkinson's disease. *Neurobiol Dis.* 2006; 22: 421–434.
- [121] Anandhan A, Tamilselvam K, Radhiga T, Rao S, Essa MM, Manivasagam T. Theaflavin, a black tea polyphenol, protects nigral dopaminergic neurons against chronic MPTP/probenecid induced Parkinson's disease. *Brain Res.* 2012; 1433: 104–113.
- [122] Tulipani S, Romandini S, Busco F, Bompadre S, Mezzetti B, Battino M. Ascorbate, not urate, modulates the plasma antioxidant capacity after strawberry intake. *Food Chem.* 2009; 117:181–188.
- [123] Balk E, Chung M, Raman G, Tatsioni A, Chew P, Ip S, DeVine D, Lau J. B vitamins and berries and age-related neurodegenerative disorders. *Evid Rep Technol Assess (Full Rep)* 2006; (134):1–161.
- [124] Lhaj ZA, Ibork H, El Idrissi S, Lhaj FA, Sobeh M, Mohamed WMY, Alamy M, Taghzouti K, Abboussi O. Bioactive strawberry fruit (*Arbutus unedo* L.) extract remedies paraquat-induced neurotoxicity in the offspring prenatally exposed rats. *Front Neurosci.* 2023; 17: 1244603.

- [125] Amro M, Teoh S, Norzana A, Srijit, DJLC. The potential role of herbal products in the treatment of Parkinson's disease. *Clin Ter.* 2018; 169: e23–e33.
- [126] Li J, Long X, Hu J, Bi J, Zhou T, Guo X, et al. Multiple pathways for natural product treatment of Parkinson's disease: A mini review. *Phytomedicine* 2019; 60: 152954.
- [127] Cheng YF, Zhu GQ, Wang M, Cheng H, Zhou A, Wang N, et al. Involvement of ubiquitin proteasome system in protective mechanisms of Puerarin to MPP⁺-elicited apoptosis. *Neurosci Res.* 2009; 63: 52–58.
- [128] Silva AH, Fonseca FN, Pimenta AT, Lima MS, Silveira ER, Viana GS, et al. Pharmacognostical analysis and protective effect of standardized extract and rizonic acid from *Erythrina velutina* against 6-hydroxydopamine-induced neurotoxicity in Sh-Sy5Y cells. *Pharmacogn Mag.* 2016; 12: 307–312.
- [129] Rahman MM, Rahaman MS, Islam MR, Rahman F, Mithi FM, Alqahtani T, et al. Role of Phenolic Compounds in Human Disease: Current Knowledge and Future Prospects. *Molecules* 2022; 27(1): 233.
- [130] Lu KT, Ko MC, Chen BY, Huang JC, Hsieh CW, Lee MC, et al. Neuroprotective effects of resveratrol on MPTP-induced neuron loss mediated by free radical scavenging. *J. Agric. Food Chem.* 2008; 56: 6910–6913.
- [131] Jin F, Wu Q, Lu YF, Gong QH, Shi JSJE. Neuroprotective effect of resveratrol on 6-OHDA-induced Parkinson's disease in rats. *Eur J Pharmacol.* 2008; 600: 78–82.
- [132] Rezaei M, Nasri S, Roughani M, Niknami Z, Ziai SAJII. *Peganum Harmala L.* extract reduces oxidative stress and improves symptoms in 6- Hydroxydopamine-induced Parkinson's disease in rats. *Iran J Pharm Res.* 2016; 15: 275–281.
- [133] LopezReal A, Rey P, SotoOtero R, MendezAlvarez E, LabandeiraGarcia J J J, Lopez-ReAl A. Angiotensin-converting enzyme inhibition reduces oxidative stress and protects dopaminergic neurons in a 6- hydroxydopamine rat model of Parkinsonism. *J Neurosci Res.* 2005; 81: 865–873.
- [134] Im HI, Joo WS, Nam E, Lee ES, Hwang Yj, Kim YSJJ. Baicalein prevents 6-hydroxydopamine-induced dopaminergic dysfunction and lipid peroxidation in mice. *J Pharmacol Sci.* 2005; 98: 185–189.
- [135] Chen HQ, Jin ZY, Wang XJ, Xu XM, Deng L, Zhao JWJNL. Luteolin protects dopaminergic neurons from inflammation-induced injury through inhibition of microglial activation. *Neurosci Lett.* 2008; 448: 175–179.
- [136] Brinkhaus B, Lindner M, Schuppan D, Hahn EJP. Chemical, pharmacological and clinical profile of the East Asian medical plant *Centella asiatica*. *Phytomedicine* 2000; 7:427–448.
- [137] Gohil KJ, Patel JA, Gajjar AK. Pharmacological Review on *Centella asiatica*: A Potential Herbal Cure-all. *Indian J Pharm Sci.* 2010; 72(5): 546–556.
- [138] Jia H, Jiang Y, Ruan Y, Zhang Y, Ma X, Zhang J, et al. Tenuigenin treatment decreases secretion of the Alzheimer's disease amyloid β -protein in cultured cells. *Neurosci Lett.* 2004; 367: 123–128.
- [139] Memarzia A, Saadat S, Behrouz S, Boskabady MH. *Curcuma longa* and curcumin affect respiratory and allergic disorders, experimental and clinical evidence: A comprehensive and updated review. *Biofactors* 2022; 48: 521–551.
- [140] Salem MA, El-Shiekh RA, Fernie AR, Alseekh S, Zayed A. Metabolomics-based profiling for quality assessment and revealing the impact of drying of *Turmeric (Curcuma longa L.)*. *Sci Rep.* 2022; 12: 1–11.

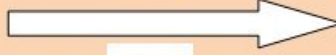
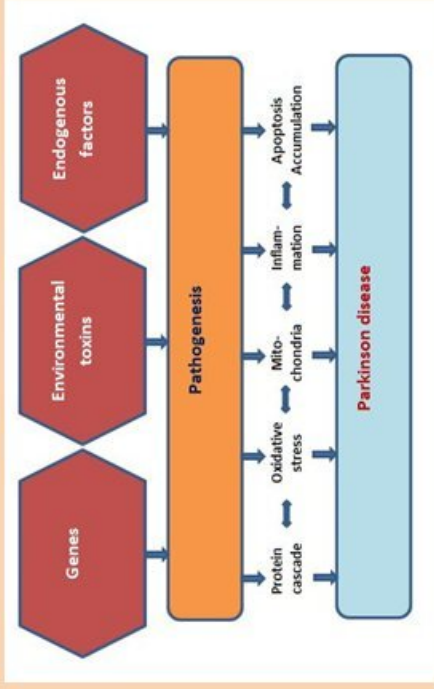
- [141] Kim DS, Park SY, Kim JYJN. Curcuminoids from *Curcuma longa* L. (Zingiberaceae) that protect PC12 rat pheochromocytoma and normal human umbilical vein endothelial cells from betaA(1-42) insult. *Neurosci Lett*. 2001; 303: 57–61.
- [142] Naser AFA, Aziz WM, Ahmed YR, Khalil WKB, Hamed MAA. Parkinsonism-like Disease Induced by Rotenone in Rats: Treatment Role of Curcumin, Dopamine Agonist and Adenosine A2A Receptor Antagonist. *Current Aging Science* 2022; 15(1): 65–76
- [143] Akhtar MN, Lam KW, Abas F, Ahmad S, Shah SAA, Choudhary MI, et al. New class of acetylcholinesterase inhibitors from the stem bark of *Knema laurina* and their structural insights. *Bioorg Med Chem Lett*. 2011; 21: 4097–4103.
- [144] Wang YM, Cui QF, Zhao WL, Zhang JY, Wang HJQB. "Nrf2/ARE/HO-1 signaling pathway is a new neuroprotective target for Parkinson's disease. *Front Pharmacol*. 2014; 34: 1125.
- [145] Kuribara H, Kishi E, Hattori N, Okada M, Maruyama YJJ. The anxiolytic effect of two oriental herbal drugs in Japan attributed to honokiol from magnolia bark. *J Pharm Pharmacol*. 2000; 52: 1425–1429.
- [146] Chen JF, Steyn S, Staal R, Petzer JP, Xu K, der Schyf CV, et al. 8-(3-Chlorostyryl)caffeine May Attenuate MPTP Neurotoxicity through Dual Actions of Monoamine Oxidase Inhibition and A2A Receptor Antagonism. *J Biol Chem* 2002; 277(39): 36040–4.
- [147] O'Callaghan C, Lewis S. Cognition in Parkinson's disease. *Int Rev Neurobiol*. 2017; 133: 557-583.
- [148] Corona JCJB. Natural compounds for the management of Parkinson's disease and attention-deficit/hyperactivity disorder. *Biomed Res Int*. 2018; 2018: 4067597
- [149] Empadinhas N, da Costa MSJEM. Diversity, biological roles and biosynthetic pathways for sugar-glycerate containing compatible solutes in bacteria and archaea. *Environ. Microbiol*. 2011; 13, 2056–2077.
- [150] Faria C, Jorge CD, Borges N, Tenreiro S, Outeiro TF, Santos H. Inhibition of formation of α -synuclein inclusions by mannosylglycerate in a yeast model of Parkinson's disease. *Biochim Biophys Acta* 2013; 1830: 4065–4072.
- [151] Monciardini P, Iorio M, Maffioli S, Sosio M, Donadio SJM. Discovering new bioactive molecules from microbial sources. *Microb Biotechnol*. 2014; 7: 209–220.
- [152] Nam SJ, Kauffman CA, Jensen PR, Fenical WJT. Isolation and characterization of actinoramides A-C, highly modified peptides from a marine *Streptomyces* sp. *Tetrahedron* 2011; 67: 6707–6712.
- [153] Li Y, Li X, Kang JS, Choi HD, Son BW. New radical scavenging and ultraviolet-A protecting prenylated dioxopiperazine alkaloid related to isoechinulin A from a marine isolate of the fungus *Aspergillus*. *J Antibiot*. 2004; 57: 337–340.
- [154] Kajimura Y, Aoki T, Kuramochi K, Kobayashi S, Sugawara F, Watanabe N, et al. Neoechinulin A protects PC12 cells against MPP⁺-induced cytotoxicity. *J Antibiot*. 2008; 61: 330–333.
- [155] Zhai A, Zhang Y, Zhu X, Liang J, Wang X, Lin Y, et al. Secalonic acid A reduced colchicine cytotoxicity through suppression of JNK, p38 MAPKs and calcium influx. *Neurochem Int*. 2011; 58: 85–91.
- [156] Galasso C, Corinaldesi C, Sansone CJA. Carotenoids from marine organisms: Biological functions and industrial applications. *Antioxidants* 2017; 6: 96.

- [157] Meenakshi S, Umayaparvathi S, Arumugam M, Balasubramanian T. In vitro antioxidant properties and FTIR analysis of two seaweeds of Gulf of Mannar. *Asian Pac J Trop Biomed.* 2011; 1:S66–S70.
- [158] Grimmig B, Daly L, Hudson C, Nash K, Bickford PJ. Astaxanthin attenuates neurotoxicity in a mouse model of Parkinson’s disease. *Funct. Foods Health Dis.* 2017; 7:562–576.
- [159] Grimmig B, Kim SH, Nash K, Bickford PC, Douglas Shytle RJG. Neuroprotective mechanisms of astaxanthin: A potential therapeutic role in preserving cognitive function in age and neurodegeneration. *Geroscience* 2017; 39: 19–32.
- [160] Gammone MA, Riccioni G, D’Orazio N. Marine carotenoids against oxidative stress: Effects on human health. *Mar Drugs* 2015; 13: 6226–6246.
- [161] Karaman MW, Herrgard S, Treiber DK, Gallant P, Atteridge CE, Campbell BT, et al. A quantitative analysis of kinase inhibitor selectivity. *Nat Biotechnol.* 2008; 26: 127–132.
- [162] Schupp P, Steube K, Meyer C, Proksch P. Anti-proliferative effects of new staurosporine derivatives isolated from a marine ascidian and its predatory flatworm. *Cancer Lett.* 2001; 174: 165–172.
- [163] Wakita S, Izumi Y, Nakai T, Adachi K, Takada-Takatori Y, Kume T, et al. Staurosporine induces dopaminergic neurite outgrowth through AMPactivated protein kinase/mammalian target of rapamycin signaling pathway. *Neuropharmacology* 2014; 77: 39–48.
- [164] Bharate SB, Sawant SD, Singh PP, Vishwakarma R. Kinase inhibitors of marine origin. *Chem Rev.* 2013; 113: 6761–6815.
- [165] Fathy RF, Abdel-Rahim EA, Shallan MA, Khalil WKB, Bassem SM, Abdel-Gawad FKH. Assessment of *Holothuria Atra* Extracts Against Synthetic Textile Dyes Induced Endocrine Disorders, Biochemical and Genetic Alterations in Nile Tilapia (*Oreochromis Niloticus*). *Int J Pharm Res.* 2021; 13(2):3392-3399.
- [166] Chalorak P, Jattujan P, Nobsathian S, Poomtong T, Sobhon P, Meemon K. *Holothuria scabra* extracts exhibit anti-Parkinson potential in *C. elegans*: A model for anti-Parkinson testing. *Nutr Neurosci.* 2018; 21: 427–438.
- [167] Xu J, Guo S, Du L, Wang YM, Sugawara T, Hirata T, et al. Isolation of cytotoxic glucoerebrosides and long-chain bases from sea cucumber *Cucumaria frondosa* using high speed counter-current chromatography. *J Oleo Sci.* 2013; 62: 133–142.
- [168] Ahmad J, Haider N, Ahmed Khan M, Shadab Md, Alhakamy NA, Ghoneim M M, Alshehri S, Imam SS, Ahmad MZ, Mishra A. Novel therapeutic interventions for combating Parkinson’s disease and prospects of Nose-to-Brain drug delivery. *Biochemical Pharmacology*, 2022; 195: 114849
- [169] Burns J, Buck AC, D’ Souza S, Dube A, Bardien S. Nanophytomedicines as Therapeutic Agents for Parkinson’s Disease. *ACS Omega.* 2023; 8(45): 42045–42061.
- [170] Ahmed Khan M, Haider N, Singh T, Bandopadhyay R, Ghoneim MM, Alshehri S, Taha M, Ahmad J, Mishra A. Promising biomarkers and therapeutic targets for the management of Parkinson's disease: Recent Advancements and Contemporary Research 2023; 38: 873–919
- [171] Farah FH, Nanocarriers as delivery systems for therapeutics agents. *International Journal of Pharmaceutical Sciences and Research* 2019; 10: 3487–3507.
- [172] Zhu X, Vo C, Taylor M, Smith BR. Non-spherical micro- and nanoparticles in nanomedicine. *Materials Horizons*, 2019; 6: 1094–1121.

- [173] Chen P, Wang H, He M, Chen B, Yang B, Hu B. Size-dependent cytotoxicity study of ZnO nanoparticles in HepG2 cells. *Ecotoxicology and Environmental Safety*; 2019; 171: 337–346.
- [174] Renero-Lecuna C, Iturrioz-Rodríguez N, González-Lavado E, et al. Effect of size, shape, and composition on the interaction of different nanomaterials with HeLa cells. *Journal of Nanomaterials* 2019; ID 7518482: 11.
- [175] Chaicherd S, Killingsworth MC, Pissuwan D. Toxicity of gold nanoparticles in a commercial dietary supplement drink on connective tissue fibroblast cells. *SN Applied Sciences* 2019; 1 (4): 336.
- [176] Jeevanandam J, Chan YS, Danquah MK. Biosynthesis of metal and metal oxide nanoparticles. *ChemBioEng Reviews*, 2016: 3 (2): 55–67.
- [177] Naz S, Gul A, Zia M. Toxicity of copper oxide nanoparticles: a review study. *IET Nanobiotechnology* 2020; 14 (1): 1–13.
- [178] Prasad EM, Hung SY. Current Therapies in Clinical Trials of Parkinson's Disease: A 2021 Update. *Pharmaceuticals* 2021; 14 (8): 717.
- [179] Sainz V, Coniot J, Matos AI, Peres C, Zupančič E, Moura L, Silva LC, Florindo HF, Gaspar RS. Regulatory Aspects on Nanomedicines. *Biochem. Biophys. Res. Commun.* 2015; 468 (3): 504–510.
- [180] Hua S, de Matos MBC, Metselaar JM, Storm G. Current Trends and Challenges in the Clinical Translation of Nanoparticulate Nanomedicines: Pathways for Translational Development and Commercialization. *Front Pharmacol* 2018; 1–14.
- [181] Henchcliffe C, Beal MF. Mitochondrial biology and oxidative stress in Parkinson disease pathogenesis. *Nat Clin Pract Neurol.* 2008; 4: 600–609.
- [182] Naoi M, Wu Y, Shamoto-Nagai M, Maruyama W. Mitochondria in Neuroprotection by Phytochemicals: Bioactive Polyphenols Modulate Mitochondrial Apoptosis System, Function and Structure. *Int J Mol Sci.* 2019; 20(10):2451.
- [183] Naoi M, Inaba-Hasegawa K, Shamoto-Nagai M, Maruyama W. Neurotrophic function of phytochemicals for neuroprotection in aging and neurodegenerative disorders: modulation of intracellular signaling and gene expression. *J Neural Transm (Vienna).* 2017; 124(12): 1515-1527.
- [184] Caruso G, Torrisi SA, Mogavero MP, Currenti W, Castellano S, Godos J, Ferri R, Galvano F, Leggio GM, Grosso G, Caraci F. Polyphenols and neuroprotection: Therapeutic implications for cognitive decline. *Pharmacol Ther.* 2022; 232: 108013.
- [185] Patti AM, Al-Rasadi K, Giglio RV, Nikolic D, Mannina C, Castellino G, Chianetta R, Banach M, Cicero AFG, Lippi G, Montalto G, Rizzo M, Toth PP. Natural approaches in metabolic syndrome management. *Arch Med Sci.* 2018; 14(2): 422-441.
- [186] Kim HR, Kim WK, Ha AW. Effects of Phytochemicals on Blood Pressure and Neuroprotection Mediated Via Brain Renin-Angiotensin System. *Nutrients.* 2019; 11(11): 2761.
- [187] Rzażew J, Radzik T, Rebas E. Calcium-Involved Action of Phytochemicals: Carotenoids and Monoterpenes in the Brain. *Int J Mol Sci.* 2020; 21(4):1428.
- [188] Salemi M, Cosentino F, Lanza G, Cantone M, Salluzzo MG, Giurato G, Borgione E, Marchese G, Santa Paola S, Lanuzza B, Romano C, Ferri R. mRNA expression profiling of mitochondrial subunits in subjects with Parkinson's disease. *Arch Med Sci.* 2021; 19(3): 678-686.

[189] Abo-Grisha N, Essawy S, Abo-Elmatty DM, Abdel-Hady Z. Effects of intravenous human umbilical cord blood CD34+ stem cell therapy versus levodopa in experimentally induced Parkinsonism in mice. Arch Med Sci. 2013; 9(6): 1138-51.

Preprint



Preprint